

Dates for the Diary

Half Term

Monday 25th May - Friday 29th May 2026

Year 10 AP2 Assessments

Monday 22nd June - Friday 3rd July 2026

Year 12 AP2 Assessments

Monday 22nd - Friday 26th June 2026

Year 11 Prom

Friday 26th June 2026 - 5.30pm-10pm

Last Day of Summer Term

Friday 17th July 2026

Student Value of the Term

**CLIMATE CHANGE
IS REAL**

House Points - Week Ending 15th May



135,633
AUSTEN



130,234
SEACOLE



118,265
ALI



114,512
HAWKING

Leadership Message - Looking Ahead with Purpose and Positivity

As we approach a key point in the academic year, I would like to acknowledge the focus and determination being shown by our students as they prepare for the next stage of their learning journey.

We are particularly proud of those students taking part in the summer GCSE examination series. These qualifications represent an important step forward, and we recognise the commitment it takes to prepare for them. Our staff continue to provide revision support, guidance, and encouragement to ensure that every student is equipped to approach their assessments with confidence and resilience.

For our Year 11 students, this period also marks the start of study leave. We ask parents and carers to please ensure that study leave arrangements have been agreed and recorded on the MCAS App, allowing us to maintain clear communication and provide appropriate support throughout this important time. Although students may be studying more independently, they remain very much part of our school community, and we wish them every success as they complete this final stage of their secondary education. For learners who continue to attend school during the examination period, revision classes and exam support is available, offering structured opportunities to consolidate learning and seek subject specific guidance.

To our Year 10 students, we understand that this time of year can feel bittersweet. As Year 11 students begin the next stage of their journey, some friendships and daily routines may naturally change, even though many students will continue their education with us in Sixth Form. The journey they are now completing is one you will soon be preparing for yourselves. Remaining fully engaged, maintaining positive learning habits, and continuing to give your best effort now will place you in a strong position as you move forward. The foundations you build today will support your success in the year ahead.



As always, we are grateful for the continued support of our families and carers. By working together, we can ensure that every student feels supported, motivated, and prepared for the opportunities ahead.

J. Stoddard

Senior Student Development Leader - Enhanced Provision

Parent/Carer Updating Contact Information

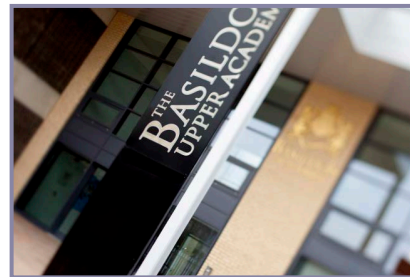
Please ensure we have current contact information on file for you, including home address, mobile phone number, and email address. If any of your details have changed, email us at admin@basildonacademies.org.uk with the updated information.

Parent Drop In - Tuesday 19th May

Our next Parent Drop In will be on Tuesday 19th May between 10am and 11am.

There will be no need to book an appointment, just sign in at reception and staff will be happy to show you to the venue. There is no set topic for the drop in sessions, if we are not able to answer any specific questions, we will follow up and then feedback to you.

Please note, if your matter is of a confidential nature, we kindly ask that you call the school to arrange a separate appointment, as parent drop-in sessions are not intended for one-to-one discussions.



Students of the Week

Congratulations to the following students who have been awarded Student of the Week for week commencing 11th May 2026.

★ Year 10 - Daniel.M (R10S2)

★ Year 11 - Jessica.N (R11E1)

Spotlight on: A Level English Literature



An historicist approach to the study of literature rests upon reading texts within a shared context. Working from the belief that no text exists in isolation but is the product of the time in which it was produced, English Literature encourages students to explore the relationships that exist between texts and the contexts within which they are written, received and understood.

Studying texts within a shared context enables students to investigate and connect them, drawing out patterns of similarity and difference using a variety of reading strategies and perspectives. Encouraging students to debate and challenge the interpretations of other readers they develop their own informed personal responses.

Full course information can be found by visiting the following link on our website: [A Level English Literature](#)

Safeguarding

Safeguarding our students is at the forefront of everything we do. Parents and carers can access information via the following link www.escb.co.uk which offers guidance and signposts to resources on various safeguarding issues. Please contact our safeguarding officers if you have any concerns about your own child or another student at the Academies.

www.basildonupperacademy.org.uk/safeguarding

Home Learning

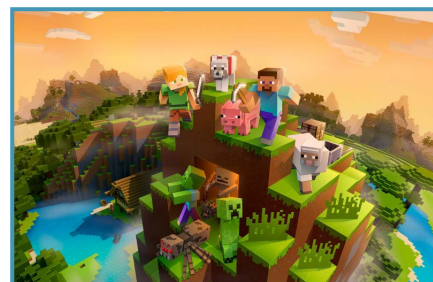
If you have any queries regarding home learning, including access issues or, to celebrate the work your child has completed at home, please visit the [Contact Us](#) page via the Basildon Upper Academy website and select the option for Home Learning/Homework.

Online Safety Advice: A Parent's Guide to Minecraft

Minecraft is one of the most popular games among children and young people, encouraging creativity, collaboration, and exploration. However, it's important for parents to understand the potential risks involved, including in-game communication, inappropriate content, and screen time.

[Click here](#) to access information and support on safety settings, setting boundaries, and talking to your child about Minecraft, please visit.

The Online Safety Hub is an online resource with lots of expert advice and guidance to help find out how to keep our young people safe online. You can access it for free here: [Online Safety Hub - The Basildon Academies](#)



Strong Student Engagement Across Revision and Intervention Programmes

As our Year 11 and Sixth Form students continue through the exam season, the Upper Academy has been providing a wide range of targeted intervention opportunities to support revision, build confidence and help students achieve their very best.

After-school revision sessions in English, Maths and Science have continued to see strong attendance, with students making the most of the flexible support available across the week. Alongside this, our Saturday School programme and recent PET-Xi intervention week have provided further focused guidance in key subject areas, with engagement from students remaining consistently high throughout.

One initiative proving particularly successful has been our popular Paper & Pizza revision sessions. These mid-week sessions continue to attract an excellent turnout from Year 11 students, creating a positive and purposeful atmosphere where students worked collaboratively alongside their peers before enjoying pizza at the end of the session. Due to the continued popularity and success of the programme, the initiative was also rolled out to Sixth Form students last week.

The consistently high attendance across all intervention opportunities, despite sessions being optional, highlights the dedication and commitment our students are showing towards their studies and future success.



Young Minds

[Young Minds](#) is the UK's leading charity committed to improving the emotional wellbeing and mental health of children and young people. Just as people's bodies can become unwell, people's minds can become unwell

Young Minds offer information to young people and children about mental health and emotional wellbeing. If you need to talk, they can let you know about organisations that listen, plus they offer online support and info.

The logo for Young Minds, featuring the word 'YOUNG' in yellow and 'MINDS' in grey, with a small yellow dot above the 'i' in 'MINDS'. The logo is enclosed in a thin black border.

YOUNG CARERS CLUBS

TUESDAY

3-4PM MS DUNWELL
G8

WEDNESDAY
ESPORTS

1-1.30PM MR EDWARDS
A17



IF YOU BELIEVE YOU ARE A YOUNG CARER, PLEASE
SPEAK TO MS DUNWELL TO REGISTER.

Aspire - Believe - Achieve

Year 11 Interventions

To support our Year 11 students as they enter the exam season, there will be additional revision sessions in English, Maths and Science each Tuesday, Wednesday and Thursday.

These will run from **3:00pm to 3:30pm**, and students can choose which days to attend and which subjects to focus on.

Attendance is optional, but has proven to really support revision and exam preparation.

YEAR 11 INTERVENTIONS

ENGLISH - MATHS - SCIENCE

EVERY TUESDAY, WEDNESDAY &
THURSDAY. 3PM - 3.30PM

Saturday School Supporting Exam Preparation

As Year 11 and Sixth Form students continue their exam preparations, we would like to remind families that our final Saturday School session will take place on Saturday 23rd May.

This last session provides a valuable opportunity for students to consolidate their learning, focus on key revision areas and receive additional support ahead of their upcoming exams in a calm and focused environment.

Saturday School will take place at the Upper Academy from 9:30am to 11:30am, and school uniform is not required.

We strongly encourage all Year 11 students to make the most of this final session as part of their preparation for success this summer.



Absence Procedures

Please let us know as soon as possible if your child is unable to attend school, ideally by 8am, by email to upperattendance@basildonacademies.org.uk or by calling 01268 498882.

- Parents/carers must contact the school by 8.30am each day their child is absent.
- If no reason has been received for a child's absence, the Academy will initiate first day calling.
- Parent/carers may be asked for medical evidence to support absences after 3 days or reoccurring absence patterns.
- Wherever possible, parents/carers should make appointments outside of school hours. If this is unavoidable students should attend school before and after the appointment.

Please familiarise yourself with our attendance procedures found on the school website within the Parent Information section, so you know who and when you need to contact us. www.basildonupperacademy.org.uk/attendance



ARRIVE BE HERE ATTEND

IN TIME TO TO

ASPIRE BELIEVE ACHIEVE

Attendance percentages as Number of days and lessons missed from school. Students are required to attend school for 190 days each year.

Attendance during one school year	Equals days absent	Which is approximately weeks absent	Which means this number of lessons missed	Absence over 5 years
95%	9 days	2 weeks	50 lessons	¼ year
90%	19 days	4 weeks	100 lessons	½ year
80%	38 days	8 weeks	200 lessons	1 year
70%	59 days	12 weeks	300 lessons	1½ years
60%	80 days	16 weeks	400 lessons	2 years
50%	100 days	20 weeks	500 lessons	2 ½ years

Government (DfE) research suggests that 16 days absence or 92% attendance in any one year equals a full GCSE drop in attainment
How does your attendance compare with this target?

Daily rewards - Daily text messages for 100% attendance are sent via text message or through the MCAS app.

Weekly Rewards - Weekly Student briefings held on Mondays highlight the students who have received 100% attendance and 0 late marks. These students will receive a raffle entry for a £5 lifestyle voucher

Half Termly rewards - Each Half-term 100% attendance postcards are given to students based on the attendance for that half term.

Termly rewards - Students receive a badge and certificate during a celebration event for their term attendance which can be pinned to their tie.



DOUGHNUT WEEK

Monday 18th – Friday 22nd May



To celebrate National Doughnut Week the Dining Hall will be serving a selection of Jam & Ring Doughnuts.

All Doughnuts are 75p each & will be available throughout the week at break & lunchtime.

Educational Psychology Parent Helpline

Essex County Council would like to remind families about the support services available to them.

The EP Parent Helpline offers advice, support, and signposting for parents and carers. It is a confidential, safe, and private service, and no referral is needed — just book an appointment in advance.



Easy to Access: The booking is designed to provide an easier and more convenient experience.

- Available on alternating Mondays and Tuesdays -1:00pm – 5:00pm
- 25-minute appointments bookable via MS Teams
- No more waiting – instant booking confirmation

For booking details and further information, please visit: [EP-Parent-Helpline](#)

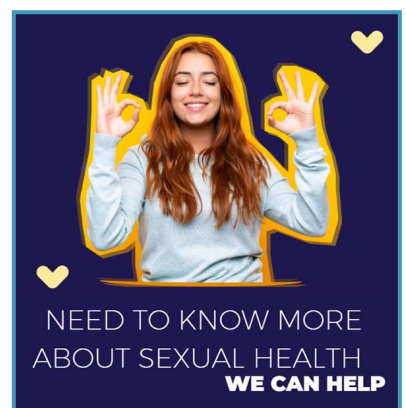
Further information is available on the Essex County Council [Local Offer](#) pages.

Supporting Personal Development and Wellbeing

As part of our Personal Development curriculum, the Academies use resources from the Essex Sexual Health Service to support students with age-appropriate information about growing up and development. Students are signposted to a trusted online hub where they can find reliable advice and answers to common questions:

Asking for a friend: <https://askingforafriend.org.uk/>

Parents and carers are also encouraged to visit the dedicated Parents and Carers section of the [Essex Sexual Health Service website](#). This provides up-to-date guidance for supporting young people, as well as advice on how to approach and discuss more challenging topics at home.



BASILDON ACADEMIES WORD OF THE DAY

18th - 22nd May 2026

Monday:	Concordance (noun) <i>mutāfiq</i> in Arabic – agreement or harmony. <i>There was concordance among the teachers on policy.</i>	
Tuesday:	Altruistic (adjective) <i>उदार</i> (<i>udār</i>) in Hindi – showing selfless concern for others. <i>His altruistic gesture helped raise funds for charity.</i>	
Wednesday:	Resonant (adjective) <i>ngangahu</i> in Māori – deep, clear, and continuing to sound. <i>The resonant bell echoed through the hall.</i>	
Thursday:	Transcendent (adjective) <i>melampau</i> in Indonesian – beyond ordinary experience. <i>The transcendent music uplifted the congregation</i>	
Friday:	Jocund (adjective) <i>jovial</i> in Haitian Creole – cheerful and light-hearted. <i>The jocund mood spread across the playground.</i>	

Job of the Week: Carer

What does a Carer do?

Carers play a vital role in supporting people who need extra help due to age, disability, illness, or learning needs. This could include working with older adults, children, or individuals with additional needs in their own homes, care homes, hospitals, or community settings.

Key Responsibilities:

- Assists with daily tasks such as washing, dressing and meals
- Supports people with medication
- Helps individuals stay independent and confident
- Provides companionship and emotional support

Labour Market Information

- +13.9% 328,648 jobs
- +17.4% in your region of East of England, an increase of 38,744 jobs

What Qualifications do you need to do this job?

Typical Entry Requirements:

No formal qualifications are required for many roles.

Employers provide training (including NVQ/Level 1 or 3 Health & Social Care) A caring attitude is the most important starting point.

Let's Talk Money

UK annual median:
£27,468

Ofsted
Good
Provider

The curriculum at Basildon Upper Academy is well thought out. It is carefully planned with staff from the Basildon Lower Academy. These plans identify what pupils need to know. It breaks down this knowledge into manageable chunks so that pupils can build on previous knowledge securely. There are frequent checks on what pupils have learned.

Follow The Basildon Upper Academy on our social media channels



SWi

Ready, Set, Save!

15%
off

Everything!

18th - 26th May

Limited time only! In-store & Online

Use Code: **SAVE15** at checkout.

We're making back-to-school easier
(and cheaper!) for you.

Promo starts Monday 18th May for a limited time
only, enjoy **15% off everything!**

Whether you're stocking up or prepping ahead, this
is the perfect time to grab everything you need.



Shop early and avoid
the summer rush.



Built to last sustainable
and high-quality
products.



Worried about growth
spurts? Don't be **we've
got extended returns.**



One-stop shop:
All your school
essentials in one place.

Shop online today and start saving!

Use Code: **SAVE15** at checkout.

swischoolwear.co.uk