



This policy was amended in consideration of the following UN Convention on the rights of the child articles; Article 1 (all articles)

SAFEGUARDING & CHILD PROTECTION POLICY

Designated Safeguarding Lead	V Oddy	Deputy Designated Safeguarding Lead	S Peake – LA S O’Neill - UA
Designated Safeguarding Governor	N Luckock	Policy Author	V Oddy
Policy Number	0021	Policy Ownership	Finance & Operations
Date of Issue/Reviewed	Sept 2023	Date of Next Review	Sept 2024
Agreed by Governors	September 2019	Reviewed by Trustees	Oct 2023

Contents

Important contacts.....	2
1. Aims	3
2. Legislation and statutory guidance	3
3. Definitions	4
4. Equality statement	5
5. Roles and responsibilities	5
6. Confidentiality	9
7. Recognising abuse and taking action.....	10
8. Online safety and the use of mobile technology.....	19
9. Notifying parents or carers	21
10. Students with special educational needs, disabilities or health issues	21
11. Students with a social worker	22
12. Children that are looked-after and previously looked-after.....	22
13. Complaints and concerns about school safeguarding policies	22
14. Record-keeping	23
15. Training.....	24
16. Monitoring arrangements.....	25
17. Links with other policies.....	25
Appendix 1: types of abuse	26
Appendix 3: allegations of abuse made against staff.....	27
Appendix 4: specific safeguarding issues	34

Important contacts

ROLE/ORGANISATION	NAME	CONTACT DETAILS
Designated Safeguarding Lead (DSL)	Suzanne O'Neill (Upper) Sophie Peake (Lower)	soneill@basildonacademies.org.uk speake@basildonacademies.org.uk
Designated Safeguarding Lead for Enhanced Provision (DSL)	Vicky Oddy	voddy@basildonacademies.org.uk
Deputy DSL (DDSL)	Sharon Harper-Penman (Upper) Jessica Russell (Lower)	sharperpenman@basildonacademies.org.uk jrussell@basildonacademies.org.uk
Deputy DSL (DDSL) for Enhanced Provision	Jennie Stoddart	jestoddart@basildonacademies.org.uk
Local authority designated officer (LADO)		03330 139 797

ROLE/ORGANISATION	NAME	CONTACT DETAILS
Chair of Trustees	N Luckock	(01268) 552536 chair@basildonacademies.org.uk
Channel helpline		020 7340 7264

Children learn best when they are healthy, safe and secure, when their individual needs are met, and when they have positive relationships with the adults caring for them.'

Statutory Framework for Early Years Foundation Stage (DfE, 2023)

This policy is for School Leaders, staff, parents / carers, volunteers, and the wider setting community. It forms part of the safeguarding arrangements for our setting and should be read in conjunction with our Behaviour Policy, and our Staff Code of Conduct.

Safeguarding and promoting the welfare of children (everyone under the age of 18) is defined in Keeping children safe in education (DfE, 2023), as:

- Protecting children from maltreatment
- Preventing impairment of children's mental and physical health or development
- Ensuring that children grow up in circumstances consistent with the provision of safe and effective care
- Taking action to enable all children to have the best outcomes

We follow a whole-setting approach to safeguarding, which ensures that keeping children safe is at the heart of everything we do, and underpins all systems, processes, and policies. It is important that our values are understood and shared by all children, staff, parents / carers, volunteers, and the wider setting community. Only by working in partnership, can we truly keep children safe.

1. Aims

The school aims to ensure that:

- Appropriate action is taken in a timely manner to safeguard and promote children's welfare
- All staff are aware of their statutory responsibilities with respect to safeguarding
- Staff are properly trained in recognising and reporting safeguarding issues
- Students are listened to and have a voice that is heard

2. Legislation and statutory guidance

This policy is based on the Department for Education's (DfE's) statutory guidance [Keeping Children Safe in Education \(2023\)](#) and [Working Together to Safeguard Children \(2018\)](#), and the [Governance Handbook](#). We comply with this guidance and the arrangements agreed and published by our 3 local safeguarding partners (see section 3).

This policy is also based on the following legislation:

- Section 175 of the [Education Act 2002](#), which places a duty on schools and local authorities to safeguard and promote the welfare of students

- [The School Staffing \(England\) Regulations 2009](#), which set out what must be recorded on the single central record and the requirement for at least 1 person conducting an interview to be trained in safer recruitment techniques
- Part 3 of the schedule to the [Education \(Independent School Standards\) Regulations 2014](#), which places a duty on academies and independent schools to safeguard and promote the welfare of students at the school
- [The Children Act 1989](#) (and [2004 amendment](#)), which provides a framework for the care and protection of children
- Section 5B(11) of the Female Genital Mutilation Act 2003, as inserted by section 74 of the [Serious Crime Act 2015](#), which places a statutory duty on teachers to report to the police where they discover that female genital mutilation (FGM) appears to have been carried out on a girl under 18
- [Statutory guidance on FGM](#), which sets out responsibilities with regards to safeguarding and supporting girls affected by FGM
- [The Rehabilitation of Offenders Act 1974](#), which outlines when people with criminal convictions can work with children
- Schedule 4 of the [Safeguarding Vulnerable Groups Act 2006](#), which defines what 'regulated activity' is in relation to children
- [Statutory guidance on the Prevent duty](#), which explains schools' duties under the Counter-Terrorism and Security Act 2015 with respect to protecting people from the risk of radicalisation and extremism
- [The Human Rights Act 1998](#), which explains that being subjected to harassment, violence and/or abuse, including that of a sexual nature, may breach any or all of the rights which apply to individuals under the [European Convention on Human Rights](#) (ECHR)
- [The Equality Act 2010](#), which makes it unlawful to discriminate against people regarding particular protected characteristics (including disability, sex, sexual orientation, gender reassignment and race). This means our governors and Headteacher should carefully consider how they are supporting their students with regard to these characteristics. The Act allows our school to take positive action to deal with particular disadvantages affecting students (where we can show it's proportionate). This includes making reasonable adjustments for disabled students. For example, it could include taking positive action to support girls where there's evidence that they're being disproportionately subjected to sexual violence or harassment
- [The Public Sector Equality Duty \(PSED\)](#), which explains that we must have due regard to eliminating unlawful discrimination, harassment and victimisation. The PSED helps us to focus on key issues of concern and how to improve student outcomes. Some students may be more at risk of harm from issues such as sexual violence; homophobic, biphobic or transphobic bullying; or racial discrimination
- This policy also complies with our funding agreement and articles of association.

3. Definitions

Safeguarding and promoting the welfare of children means:

- Protecting children from maltreatment
- Preventing impairment of children's mental and physical health or development
- Ensuring that children grow up in circumstances consistent with the provision of safe and effective care
- Taking action to enable all children to have the best outcomes

Child protection is part of this definition and refers to activities undertaken to prevent children suffering, or being likely to suffer, significant harm.

Abuse is a form of maltreatment of a child, and may involve inflicting harm or failing to act to prevent harm. Appendix 1 explains the different types of abuse.

Neglect is a form of abuse and is the persistent failure to meet a child's basic physical and/or psychological needs, likely to result in the serious impairment of the child's health or development. Appendix 1 defines neglect in more detail.

Sharing of nudes and semi-nudes (also known as sexting or youth-produced sexual imagery) is where children share nude or semi-nude images, videos or live streams.

Children includes everyone under the age of 18.

The following 3 **safeguarding partners** are identified in Keeping Children Safe in Education (and defined in the Children Act 2004, as amended by chapter 2 of the Children and Social Work Act 2017). They will make arrangements to work together to safeguard and promote the welfare of local children, including identifying and responding to their needs:

- The local authority (LA)
- Integrated care boards (previously known as clinical commissioning groups) for an area within the LA
- The chief officer of police for a police area in the LA area

Victim is a widely understood and recognised term, but we understand that not everyone who has been subjected to abuse considers themselves a victim, or would want to be described that way. When managing an incident, we will be prepared to use any term that the child involved feels most comfortable with such as survivor or reporting student.

Alleged perpetrator(s) and **perpetrator(s)** are widely used and recognised terms. However, we will think carefully about what terminology we use (especially in front of children) as, in some cases, abusive behaviour can be harmful to the perpetrator too. We will decide what's appropriate and which terms to use on a case-by-case basis, for example reported student.

4. Equality statement

Some children are more susceptible to abuse, both online and offline, and additional barriers can exist for some children with respect to recognising or disclosing it. We are committed to anti-discriminatory practice and recognise children's diverse circumstances. We ensure that all children have the same protection, regardless of any barriers they may face.

We give special consideration to children who:

- Have special educational needs and/or disabilities (SEND) or health conditions (see section 10)
- Are young carers
- May experience discrimination due to their race, ethnicity, religion, gender identification or sexuality
- Have English as an additional language
- Are known to be living in difficult situations – for example, temporary accommodation or where there are issues such as substance abuse or domestic violence
- Are at risk of FGM, exploitation (sexual, criminal, financial), forced marriage, or radicalisation
- Are asylum seekers
- Are at risk due to either their own or a family member's mental health needs
- Are looked after or previously looked after (see section 12)
- Are missing or are absent from education for prolonged periods and/or repeat occasions
- Whose parent/carer has expressed an intention to remove them from school to be home educated

5. Roles and responsibilities

Safeguarding and child protection is **everyone's** responsibility and should be a priority for all staff. This policy applies to all staff, volunteers and governors in the school and is consistent with the procedures of the 3 safeguarding partners. Our policy and procedures also apply to extended school and off-site activities.

The school plays a crucial role in preventative education. This is in the context of a whole-school approach to preparing students for life in modern Britain, and a culture of zero tolerance of sexism, misogyny/misandry, homophobia, biphobia, transphobia and sexual violence/harassment. This will be underpinned by our:

- Behaviour policy
- Pastoral support system
- Planned programme of relationships, sex and health education (RSHE), which is inclusive and delivered regularly, tackling issues such as:
 - Healthy and respectful relationships
 - Boundaries and consent
 - Stereotyping, prejudice and equality
 - Body confidence and self-esteem
 - How to recognise an abusive relationship (including coercive and controlling behaviour)
 - The concepts of, and laws relating to, sexual consent, sexual exploitation, abuse, grooming, coercion, harassment, rape, domestic abuse, so-called honour-based violence such as forced marriage and FGM and how to access support
 - What constitutes sexual harassment and sexual violence and why they're always unacceptable

5.1 All staff

All staff will:

- Read and understand part 1 and annex B of the Department for Education's statutory safeguarding guidance, [Keeping Children Safe in Education](#), and review this guidance at least annually
- Sign a declaration at the beginning of each academic year to say that they have reviewed the guidance
- Reinforce the importance of online safety when communicating with parents and carers. This includes making parents and carers aware of what we ask children to do online (e.g. sites they need to visit or who they'll be interacting with online)
- Provide a safe space for students who are LGBTQ+ to speak out and share their concerns

All staff will be aware of:

- Our systems which support safeguarding which include CPOMs and our safeguarding@ email account, our child protection and safeguarding policy, the staff code of conduct, the role and identity of the designated safeguarding lead (DSL) and deputies, the behaviour policy, IT acceptable use including online safety which includes the expectations, applicable roles and responsibilities in relation to filtering and monitoring,] and the safeguarding response to children who go missing from education
- The early help assessment process (sometimes known as the common assessment framework) and their role in it, including identifying emerging problems, liaising with the DSL, and sharing information with other professionals to support early identification and assessment
- The process for making referrals to local authority children's social care and for statutory assessments that may follow a referral, including the role they might be expected to play
- What to do if they identify a safeguarding issue or a child tells them they are being abused or neglected, including specific issues such as FGM, and how to maintain an appropriate level of confidentiality while liaising with relevant professionals
- The signs of different types of abuse and neglect, as well as specific safeguarding issues, such as child-on-child abuse, child sexual exploitation (CSE), child criminal exploitation (CCE), indicators of being at risk from or involved with serious violent crime, FGM, radicalisation and serious violence (including that linked to county lines)

- The importance of reassuring victims that they are being taken seriously and that they will be supported and kept safe
- The fact that children can be at risk of harm inside and outside of their home, at school and online
- The fact that children who are (or who are perceived to be) lesbian, gay, bi or trans (LGBTQ+) can be targeted by other children
- What to look for to identify children who need help or protection

Section 15 and appendix 4 of this policy outline in more detail how staff are supported to do this.

5.2 The designated safeguarding lead (DSL)

The DSL is a member of the senior leadership team. Our DSL for the Upper Academy is Suzanne O'Neill, for the Lower Academy is Sophie Peake and for our Enhanced Provision is Victoria Oddy (Director of Enhanced Provision). The DSL takes lead responsibility for child protection and wider safeguarding in the school. This includes online safety and understanding our filtering and monitoring processes on school devices and school networks to keep students safe online.

During term time, the DSL will be available during school hours for staff to discuss any safeguarding concerns.

When the DSL is absent or not available please contact:

Suzanne O'Neill (Upper) soneill@basildonacademies.org.uk

Sophie Peake (Lower) speake@basildonacademies.org.uk

If a safeguarding incident occurs for example, during out-of-hours/out-of-term activities you should report using safeguarding@basildonacademies.org.uk.

The DSL will be given the time, funding, training, resources and support to:

- Provide advice and support to other staff on child welfare and child protection matters
- Take part in strategy discussions and inter-agency meetings and/or support other staff to do so
- Contribute to the assessment of children
- Refer suspected cases, as appropriate, to the relevant body (local authority children's social care, Channel programme, Disclosure and Barring Service, and/or police), and support staff who make such referrals directly
- Have a good understanding of harmful sexual behaviour
- Have a good understanding of the filtering and monitoring systems and processes in place at our school

The DSL will also:

- Keep the Headteacher informed of any issues
- Liaise with local authority case managers and designated officers for child protection concerns as appropriate
- Discuss the local response to sexual violence and sexual harassment with police and local authority children's social care colleagues to prepare the school's policies
- Be confident that they know what local specialist support is available to support all children involved (including victims and alleged perpetrators) in sexual violence and sexual harassment, and be confident as to how to access this support
- Be aware that children must have an 'appropriate adult' to support and help them in the case of a police investigation or search

The full responsibilities of the DSL and deputies are set out in their job description.

5.3 The Trust Board

The trust board will:

- Facilitate a whole-school approach to safeguarding, ensuring that safeguarding and child protection are at the forefront of, and underpin, all relevant aspects of process and policy development
- Evaluate and approve this policy at each review, ensuring it complies with the law, and hold the Headteacher to account for its implementation
- Be aware of its obligations under the Human Rights Act 1998, the Equality Act 2010 (including the Public Sector Equality Duty), and our school's local multi-agency safeguarding arrangements
- Appoint a link governor to monitor the effectiveness of this policy in conjunction with the full trust board. This is always a different person from the DSL
- Ensure all staff and Governors undergo safeguarding and child protection training, including online safety, and that such training is regularly updated and is in line with advice from the safeguarding partners
- Ensure that the school has appropriate filtering and monitoring systems in place, and review their effectiveness. This includes:
 - Making sure that the leadership team and staff are aware of the provisions in place, and that they understand their expectations, roles and responsibilities around filtering and monitoring as part of safeguarding training
 - Reviewing the [DfE's filtering and monitoring standards](#), and discussing with IT staff and service providers what needs to be done to support the school in meeting these standards
- Make sure:
 - The DSL has the appropriate status and authority to carry out their job, including additional time, funding, training, resources and support
 - Online safety is a running and interrelated theme within the whole-school approach to safeguarding and related policies
 - The DSL has lead authority for safeguarding, including online safety and understanding the filtering and monitoring systems and processes in place
 - The school has procedures to manage any safeguarding concerns (no matter how small) or allegations that do not meet the harm threshold (low-level concerns) about staff members (including supply staff, volunteers and contractors). Appendix 3 of this policy covers this procedure
 - That this policy reflects that children with SEND, or certain medical or physical health conditions, can face additional barriers to any abuse or neglect being recognised
- Where another body is providing services or activities (regardless of whether or not the children who attend these services/activities are children on the school roll):
 - Seek assurance that the other body has appropriate safeguarding and child protection policies/procedures in place, and inspect them if needed
 - Make sure there are arrangements for the body to liaise with the school about safeguarding arrangements, where appropriate
 - Make sure that safeguarding requirements are a condition of using the school premises, and that any agreement to use the premises would be terminated if the other body fails to comply

The chair of governors will act as the 'case manager' in the event that an allegation of abuse is made against the Headteacher, where appropriate (see appendix 3).

All governors will read Keeping Children Safe in Education in its entirety.

Section 15 of this policy has information on how governors are supported to fulfil their role.

5.4 The Headteacher

The Headteacher plays a pivotal role in embedding safeguarding within our school ethos, ensuring it remains a paramount concern in all aspects of school life. They lead by example, making safeguarding a consistent topic in agendas and briefings, fostering a culture where the safety and well-being of students are top priorities.

The Headteacher is responsible for the implementation of this policy, including:

- Ensuring that staff (including temporary staff) and volunteers:
 - Are informed of our systems which support safeguarding, including this policy, as part of their induction
 - Understand and follow the procedures included in this policy, particularly those concerning referrals of cases of suspected abuse and neglect
- Communicating this policy to parents/carers when their child joins the school and via the school website
- Ensuring that the DSL has appropriate time, funding, training and resources, and that there is always adequate cover if the DSL is absent
- Acting as the 'case manager' in the event of an allegation of abuse made against another member of staff or volunteer, where appropriate (see appendix 3)
- Making decisions regarding all low-level concerns, though they may wish to collaborate with the DSL on this

6. Confidentiality

In line with earlier guidance on information sharing in relation to any allegations reported the following guidance may be referred to if an allegation is made:

- In an allegation management meeting or during the initial assessment of the case, the agencies involved should share all relevant information they have about the person who is the subject of the allegation, and about the alleged victim
- If the police are involved, wherever possible the academy will ask the police to obtain consent from the individuals involved to share their statements and evidence for use in the employer's disciplinary process.
- Children's social care should adopt a similar procedure when making enquiries to determine whether the child or children named in the allegation are in need of protection or services,
- The academy will make every effort to maintain confidentiality and guard against unwanted publicity while an allegation is being investigated or considered.

You should note that:

- Timely information sharing is essential to effective safeguarding
- Fears about sharing information must not be allowed to stand in the way of the need to promote the welfare, and protect the safety, of children
- The Data Protection Act (DPA) 2018 and UK GDPR do not prevent, or limit, the sharing of information for the purposes of keeping children safe
- If staff need to share 'special category personal data', the DPA 2018 contains 'safeguarding of children and individuals at risk' as a processing condition that allows practitioners to share information without consent if: it is not possible to gain consent; it cannot be reasonably expected that a practitioner gains consent; or if to gain consent would place a child at risk. If consent is not obtained from parents/carers prior to a referral the reason for this will be recorded.
- Staff should never promise a child that they will not tell anyone about a report of abuse, as this may not be in the child's best interests. Staff should be open and honest with the child about what will happen next.
- If a victim asks the school not to tell anyone about the sexual violence or sexual harassment:
 - There's no definitive answer, because even if a victim doesn't consent to sharing information, staff may still lawfully share it if there's another legal basis under the UK GDPR that applies

- The DSL will have to balance the victim's wishes against their duty to protect the victim and other children
- The DSL should consider that:
 - Parents or carers should normally be informed (unless this would put the victim at greater risk)
 - The basic safeguarding principle is: if a child is at risk of harm, is in immediate danger, or has been harmed, a referral should be made to local authority children's social care
 - Rape, assault by penetration and sexual assault are crimes. Where a report of rape, assault by penetration or sexual assault is made, this should be referred to the police. While the age of criminal responsibility is 10, if the alleged perpetrator is under 10, the starting principle of referring to the police remains
- Regarding anonymity, all staff will:
 - Be aware of anonymity, witness support and the criminal process in general where an allegation of sexual violence or sexual harassment is progressing through the criminal justice system
 - Do all they reasonably can to protect the anonymity of any children involved in any report of sexual violence or sexual harassment, for example, carefully considering which staff should know about the report, and any support for children involved
 - Consider the potential impact of social media in facilitating the spreading of rumours and exposing victims' identities
- The government's [information sharing advice for safeguarding practitioners](#) includes 7 'golden rules' for sharing information, and will support staff who have to make decisions about sharing information
- If staff are in any doubt about sharing information, they should speak to the DSL (or deputy)
- Confidentiality is also addressed in this policy with respect to record-keeping in section 14, and allegations of abuse against staff in appendix 3

7. Recognising abuse and taking action

Staff, volunteers and governors must follow the procedures set out below in the event of a safeguarding issue.

Please note – in this and subsequent sections, you should take any references to the DSL to mean “the DSL (or deputy DSL)”.

7.1 If a child is suffering or likely to suffer harm, or in immediate danger

Make a referral to children's social care and/or the police **immediately** if you believe a child is suffering or likely to suffer from harm, or is in immediate danger. **Anyone can make a referral.**

Tell the DSL (see section 5.2) as soon as possible if you make a referral directly.

Where there is risk of immediate harm, concerns will be referred by telephone to the Children and Families Hub and / or the Police. Less urgent concerns or requests for support will be sent to the Children and Families Hub via Essex Effective Support. The setting may also seek advice from Essex Social Care or another appropriate agency about a concern if we are unsure how to respond to it.

Wherever possible, we will share any safeguarding concerns, or an intention to refer a child to Children's Social Care, with parents / carers. However, we will not do so where it is felt that to do so could place a child at greater risk of harm or impede a criminal investigation. If it is necessary for another agency to meet with a child in the setting, we will always seek to inform parents or carers, unless we are advised not to by that agency. On occasions, it may be necessary to consult with the Children and Families Hub and / or Essex Police for advice on when to share information with parents / carers.

If, for any reason, the DSL/DDSLs is not immediately available, this will not delay any appropriate action being taken. Safeguarding contact details are displayed in the setting to ensure that all staff members have access

to urgent safeguarding support, should it be required. Any individual may refer to Social Care where there is suspected or actual risk of harm to a child.

When new staff, volunteers or regular visitors join our setting they are informed of the safeguarding arrangements in place, the name of the DSL/DDSLs and how to share concerns with them through a safeguarding induction.

<https://www.gov.uk/report-child-abuse-to-local-council>

7.2 If a child makes a disclosure to you

If a child discloses a safeguarding issue to you, you should:

- Listen to and believe them. Allow them time to talk freely and do not ask leading questions
- Stay calm and do not show that you are shocked or upset
- Tell the child they have done the right thing in telling you. Do not tell them they should have told you sooner
- Explain what will happen next and that you will have to pass this information on. Do not promise to keep it a secret
- Write up your conversation as soon as possible in the child's own words. Stick to the facts, and do not put your own judgement on it
- Complete your account through CPOMs alerting the safeguarding team, ensuring any notes are scanned and attached to your entry. Alternatively, if appropriate, make a referral to children's social care and/or the police directly (see 7.1), and tell the DSL as soon as possible that you have done so. Aside from these people, do not disclose the information to anyone else unless told to do so by a relevant authority involved in the safeguarding process. The safeguarding team will ensure they feedback to the child throughout the process.

Bear in mind that some children may:

- Not feel ready, or know how to tell someone that they are being abused, exploited or neglected
- Not recognise their experiences as harmful
- Feel embarrassed, humiliated or threatened. This could be due to their vulnerability, disability, sexual orientation and/or language barriers

None of this should stop you from having a 'professional curiosity' and speaking to the DSL of the child, if you have concerns about a child.

7.3 If you discover that FGM has taken place or a student is at risk of FGM

Keeping Children Safe in Education explains that FGM comprises "all procedures involving partial or total removal of the external female genitalia, or other injury to the female genital organs".

FGM is illegal in the UK and a form of child abuse with long-lasting, harmful consequences. It is also known as 'female genital cutting', 'circumcision' or 'initiation'.

Possible indicators that a student has already been subjected to FGM, and factors that suggest a student may be at risk, are set out in appendix 4 of this policy.

Any teacher who either:

- Is informed by a girl under 18 that an act of FGM has been carried out on her; or
- Observes physical signs which appear to show that an act of FGM has been carried out on a girl under 18 and they have no reason to believe that the act was necessary for the girl's physical or mental health or for purposes connected with labour or birth

Must immediately report this to the police, personally. This is a mandatory statutory duty, and teachers will face disciplinary sanctions for failing to meet it.

Unless they have been specifically told not to disclose, they should also discuss the case with the DSL and involve children's social care as appropriate.

Any other member of staff who discovers that an act of FGM appears to have been carried out on a **student under 18** must speak to the DSL and follow our local safeguarding procedures.

The duty for teachers mentioned above does not apply in cases where a student is *at risk* of FGM or FGM is suspected but is not known to have been carried out. Staff should not examine students.

Any member of staff who suspects a student is *at risk* of FGM or suspects that FGM has been carried out or discovers that a student **aged 18 or over** appears to have been a victim of FGM should speak to the DSL and report this to the policy.

Information about FGM is available on the National FGM Centre website.

[FGM – National FGM Centre](#)

7.4 If you have concerns about a child (as opposed to believing a child is suffering or likely to suffer from harm, or is in immediate danger)

Figure 1 below, before section 7.7, illustrates the procedure to follow if you have any concerns about a child's welfare.

Where possible, speak to the DSL first to agree a course of action.

If in exceptional circumstances the DSL is not available, this should not delay appropriate action being taken. Speak to a member of the senior leadership team and/or take advice from local authority children's social care. You can also seek advice at any time from the NSPCC helpline on 0808 800 5000. Share details of any actions you take with the DSL as soon as practically possible.

Make a referral to local authority children's social care directly, if appropriate (see 'Referral' below). Share any action taken with the DSL as soon as possible. Including copies of the incident form and if consent was obtained from parents/carers.

Early help assessment

If an early help assessment is appropriate, the DSL will generally lead on liaising with other agencies and setting up an inter-agency assessment as appropriate. Staff may be required to support other agencies and professionals in an early help assessment, in some cases acting as the lead practitioner.

We will discuss and agree, with statutory safeguarding partners, levels for the different types of assessment, as part of local arrangements.

The DSL will keep the case under constant review and the school will consider a referral to local authority children's social care if the situation does not seem to be improving. Timelines of interventions will be monitored and reviewed.

Our setting works with key local partners to promote the welfare of children and protect them from harm. This includes providing a co-ordinated offer of early help when additional needs of children are identified and contributing to inter-agency plans which provide additional support (through a Child In Need or a Child Protection plan).

All staff members have a duty to identify and respond to suspected / actual abuse or disclosures of abuse. Any member of staff, volunteer or visitor to the setting who receives a disclosure or allegation of abuse, or suspects that abuse may have occurred, must report it immediately to the DSL (or, in their absence, the DDSs).

Where there is risk of immediate harm, concerns will be referred by telephone to the Children and Families Hub and / or the Police. Less urgent concerns or requests for support will be sent to the Children and Families Hub via Essex Effective Support. The setting may also seek advice from Essex Social Care or another appropriate agency about a concern if we are unsure how to respond to it.

Referral

If it is appropriate to refer the case to local authority children's social care or the police, the DSL will make the referral or support you to do so.

If you make a referral directly (see section 7.1), you must tell the DSL as soon as possible.

The local authority will make a decision within 1 working day of a referral about what course of action to take and will let the person who made the referral know the outcome. The DSL or person who made the referral must follow up with the local authority if this information is not made available, and ensure outcomes are properly recorded.

If the child's situation does not seem to be improving after the referral, the DSL or person who made the referral must follow local escalation procedures to ensure their concerns have been addressed and that the child's situation improves.

7.5 If you have concerns about extremism

If a child is not suffering or likely to suffer from harm, or in immediate danger, where possible speak to the DSL first to agree a course of action.

If in exceptional circumstances the DSL is not available, this should not delay appropriate action being taken. Speak to a member of the senior leadership team and/or seek advice from local authority children's social care. Make a referral to local authority children's social care directly, if appropriate (see 'Referral' above). Inform the DSL or deputy as soon as practically possible after the referral.

Where there is a concern, the DSL will consider the level of risk and decide which agency to make a referral to. This could include [Channel](#), the government's programme for identifying and supporting individuals at risk of being drawn into terrorism, or the local authority children's social care team.

The DfE also has a dedicated telephone helpline, 020 7340 7264, which school staff and governors can call to raise concerns about extremism with respect to a student. You can also email counter.extremism@education.gov.uk. Note that this is not for use in emergency situations.

In an emergency, call 999 or the confidential anti-terrorist hotline on 0800 789 321 if you:

- Think someone is in immediate danger
- Think someone may be planning to travel to join an extremist group
- See or hear something that may be terrorist-related

7.6 If you have a concern about mental health

Mental health problems can, in some cases, be an indicator that a child has suffered or is at risk of suffering abuse, neglect or exploitation.

Staff will be alert to behavioural signs that suggest a child may be experiencing a mental health problem or be at risk of developing one.

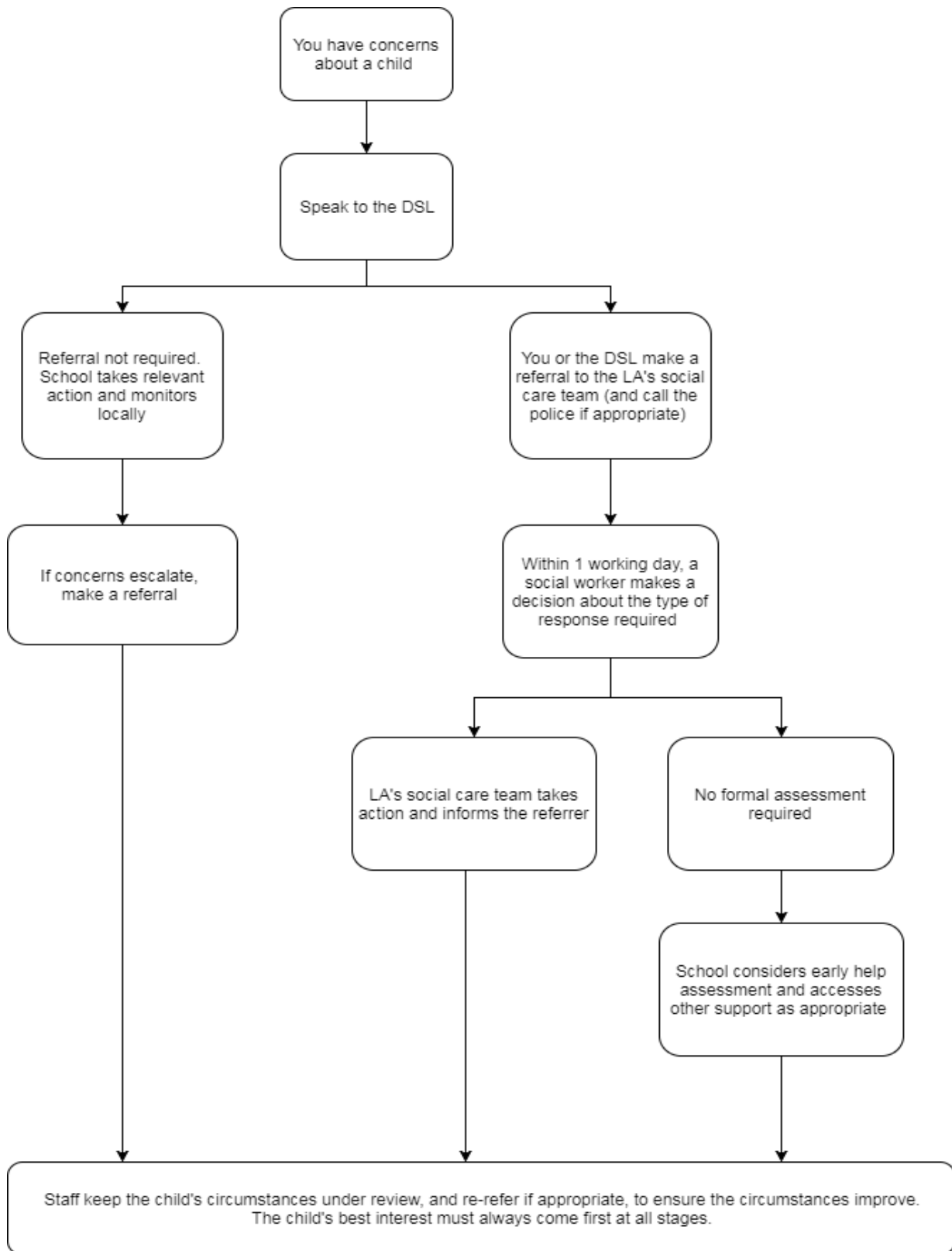
If you have a mental health concern about a child that is also a safeguarding concern, take immediate action by following the steps in section 7.4.

If you have a mental health concern that is **not** also a safeguarding concern, speak to the DSL to agree a course of action.

The academy's Wellbeing centre and Mental Health leads support a whole school approach to mental Health, supporting students and staff mental health. Concerns can be reported through a clear triage system via HOY or directly to the Wellbeing team via CPOMs

Figure 1: procedure if you have concerns about a child's welfare (as opposed to believing a child is suffering or likely to suffer from harm, or in immediate danger)

(Note – if the DSL is unavailable, this should not delay action. See section 7.4 for what to do.)



7.7 Concerns about a staff member, supply teacher, volunteer or contractor

If you have concerns about a member of staff (including a supply teacher, volunteer or contractor), or an allegation is made about a member of staff (including a supply teacher, volunteer or contractor) posing a risk of harm to children, speak to the Headteacher as soon as possible. If the concerns/allegations are about the Headteacher, speak to the chair of governors.

The Headteacher/chair of governors will then follow the procedures set out in appendix 3, if appropriate.

If you have concerns about a member of staff (including a supply teacher, volunteer or contractor), or an allegation is made about a member of staff (including a supply teacher, volunteer or contractor) posing a risk of harm to children, speak to the Headteacher as soon as possible. If the concerns/allegations are about the Headteacher, speak to the chair of governor using their school contact details.

The Headteacher/chair of governor will then follow the procedures set out in appendix 3, if appropriate.

Where you believe there is a conflict of interest in reporting a concern or allegation about a member of staff (including a supply teacher, volunteer or contractor) to the Headteacher, report it directly to the local authority designated officer (LADO).

If you receive an allegation relating to an incident where an individual or organisation was using the school premises for running an activity for children, follow our school safeguarding policies and procedures, informing the LADO on 03330 139 797, as you would with any safeguarding allegation.

7.8 Allegations of abuse made against other students

We recognise that children are capable of abusing their peers. Abuse will never be tolerated or passed off as “banter”, “just having a laugh” or “part of growing up”, as this can lead to a culture of unacceptable behaviours and an unsafe environment for students.

All child-on-child abuse is unacceptable and will be taken seriously.

Most cases of students hurting other students will be dealt with under our school’s behaviour policy, but this child protection and safeguarding policy will apply to any allegations that raise safeguarding concerns. This might include where the alleged behaviour:

- Is serious, and potentially a criminal offence
- Could put students in the school at risk
- Is violent
- Involves students being forced to use drugs or alcohol
- Involves sexual exploitation, sexual abuse or sexual harassment, such as indecent exposure, sexual assault, upskirting or sexually inappropriate pictures or videos (including the sharing of nudes and semi-nudes)

See appendix 4 for more information about child-on-child abuse.

Procedures for dealing with allegations of child-on-child abuse

If a student makes an allegation of abuse against another student:

- You must record the allegation and tell the DSL, but do not investigate it
- The DSL will contact the local authority children’s social care team and follow its advice, as well as the police if the allegation involves a potential criminal offence
- The DSL will put a risk assessment and support plan into place for all children involved (including the victim(s)/reporting student, the child(ren) against whom the allegation has been made and any others affected) with a named person they can talk to if needed. Where possible the reporting student and reported student will be allocated a different named person to support them. This will include considering school transport as a potentially vulnerable place for a victim or alleged perpetrator(s)
- The DSL will contact the children and adolescent mental health services (CAMHS), if appropriate

If the incident is a criminal offence and there are delays in the criminal process, the DSL will work closely with the police (and other agencies as required) while protecting children and/or taking any disciplinary measures against the alleged perpetrator. We will ask the police if we have any questions about the investigation.

Creating a supportive environment in school and minimising the risk of child-on-child abuse

We recognise the importance of taking proactive action to minimise the risk of child-on-child abuse, and of creating a supportive environment where victims feel confident in reporting incidents.

To achieve this, we will:

- Challenge any form of derogatory or sexualised language or inappropriate behaviour between peers, including requesting or sending sexual images
- Be vigilant to issues that particularly affect different genders – for example, sexualised or aggressive touching or grabbing towards female students, and initiation or hazing type violence with respect to boys
- Ensure our curriculum helps to educate students about appropriate behaviour and consent
- Ensure students are able to easily and confidently report abuse using our reporting systems (as described in section 7.10 below)
- Ensure staff reassure victims that they are being taken seriously
- Be alert to reports of sexual violence and/or harassment that may point to environmental or systemic problems that could be addressed by updating policies, processes and the curriculum, or could reflect wider issues in the local area that should be shared with safeguarding partners
- Support children who have witnessed sexual violence, especially rape or assault by penetration. We will do all we can to make sure the victim, alleged perpetrator(s) and any witnesses are not bullied or harassed
- Consider intra-familial harms including sibling abuse, and any necessary support for siblings following a report of sexual violence and/or harassment
- Ensure staff are trained to understand:
 - How to recognise the indicators and signs of child-on-child abuse, and know how to identify it and respond to reports
 - That even if there are no reports of child-on-child abuse in school, it does not mean it is not happening – staff should maintain an attitude of “it could happen here”
 - That if they have any concerns about a child’s welfare, they should act on them immediately rather than wait to be told, and that victims may not always make a direct report. For example:
 - Children can show signs or act in ways they hope adults will notice and react to
 - A friend may make a report
 - A member of staff may overhear a conversation
 - A child’s behaviour might indicate that something is wrong
 - That certain children may face additional barriers to telling someone because of their vulnerability, disability, gender, ethnicity and/or sexual orientation
 - That a student harming a peer could be a sign that the child is being abused themselves, and that this would fall under the scope of this policy
 - The important role they have to play in preventing child-on-child abuse and responding where they believe a child may be at risk from it
 - That they should speak to the DSL if they have any concerns
 - That social media is likely to play a role in the fall-out from any incident or alleged incident, including for potential contact between the victim, alleged perpetrator(s) and friends from either side

The DSL will take the lead role in any disciplining of the alleged perpetrator(s). We will provide support at the same time as taking any disciplinary action.

Disciplinary action can be taken while other investigations are going on, e.g. by the police. The fact that another body is investigating or has investigated an incident doesn't (in itself) prevent our school from coming to its own conclusion about what happened and imposing a penalty accordingly. We will consider these matters on a case-by-case basis, taking into account whether:

- Taking action would prejudice an investigation and/or subsequent prosecution – we will liaise with the police and/or local authority children's social care to determine this
- There are circumstances that make it unreasonable or irrational for us to reach our own view about what happened while an independent investigation is ongoing

7.9 Sharing of nudes and semi-nudes ('sexting')

Your responsibilities when responding to an incident

If you are made aware of an incident involving the consensual or non-consensual sharing of nude or semi-nude images/videos (also known as 'sexting' or 'youth produced sexual imagery'), you must report it to the DSL immediately.

You must **not**:

- View, copy, print, share, store or save the imagery yourself, or ask a student to share or download it (if you have already viewed the imagery by accident, you must report this to the DSL)
- Delete the imagery or ask the student to delete it
- Ask the student(s) who are involved in the incident to disclose information regarding the imagery (this is the DSL's responsibility)
- Share information about the incident with other members of staff, the student(s) it involves or their, or other, parents and/or carers
- Say or do anything to blame or shame any young people involved

You should explain that you need to report the incident, and reassure the student(s) that they will receive support and help from the DSL.

Initial review meeting

Following a report of an incident, the DSL will hold an initial review meeting with appropriate school staff – this may include the staff member who reported the incident and the safeguarding or leadership team that deals with safeguarding concerns. This meeting will consider the initial evidence and aim to determine:

- Whether there is an immediate risk to student(s)
- If a referral needs to be made to the police and/or children's social care
- If it is necessary to view the image(s) in order to safeguard the young person (in most cases, images or videos should not be viewed)
- What further information is required to decide on the best response
- Whether the image(s) has been shared widely and via what services and/or platforms (this may be unknown)
- Whether immediate action should be taken to delete or remove images or videos from devices or online services
- Any relevant facts about the students involved which would influence risk assessment
- If there is a need to contact another school, college, setting or individual
- Whether to contact parents or carers of the students involved (in most cases parents/carers should be involved)

The DSL will make an immediate referral to police and/or children's social care if:

- The incident involves an adult
- There is reason to believe that a young person has been coerced, blackmailed or groomed, or if there are concerns about their capacity to consent (for example, owing to SEN)
- What the DSL knows about the images or videos suggests the content depicts sexual acts which are unusual for the young person's developmental stage, or are violent
- The imagery involves sexual acts and any student in the images or videos is under 13
- The DSL has reason to believe a student is at immediate risk of harm owing to the sharing of nudes and semi-nudes (for example, the young person is presenting as suicidal or self-harming)

If none of the above apply then the DSL, in consultation with the Headteacher and other members of staff as appropriate, may decide to respond to the incident without involving the police or children's social care. The decision will be made and recorded in line with the procedures set out in this policy.

Further review by the DSL

If at the initial review stage a decision has been made not to refer to police and/or children's social care, the DSL will conduct a further review to establish the facts and assess the risks.

They will hold interviews with the students involved (if appropriate).

If at any point in the process there is a concern that a student has been harmed or is at risk of harm, a referral will be made to children's social care and/or the police immediately.

Informing parents/carers

The DSL will inform parents/carers at an early stage and keep them involved in the process, unless there is a good reason to believe that involving them would put the student at risk of harm.

Referring to the police

If it is necessary to refer an incident to the police, this will be done through our police community support officer, or using 101.

Recording incidents

All incidents of sharing of nudes and semi-nudes, and the decisions made in responding to them, will be recorded. The record-keeping arrangements set out in section 14 of this policy also apply to recording these incidents.

Curriculum coverage

Students are taught about the issues surrounding the sharing of nudes and semi-nudes as part of our relationships and sex education programme and through our assembly programme. Teaching covers the following in relation to the sharing of nudes and semi-nudes:

- What it is
- How it is most likely to be encountered
- The consequences of requesting, forwarding or providing such images, including when it is and is not abusive and when it may be deemed as online sexual harassment
- Issues of legality
- The risk of damage to people's feelings and reputation

Students also learn the strategies and skills needed to manage:

- Specific requests or pressure to provide (or forward) such images
- The receipt of such images

This policy on the sharing of nudes and semi-nudes is also shared with students so they are aware of the processes the school will follow in the event of an incident.

7.10 Reporting systems for our students

Where there is a safeguarding concern, we will take the child's wishes and feelings into account when determining what action to take and what services to provide.

We recognise the importance of ensuring students feel safe and comfortable to come forward and report any concerns and/or allegations.

To achieve this, we will:

- Put systems in place for students to confidently report abuse
- Ensure our reporting systems are well promoted, easily understood and easily accessible for students
- Make it clear to students that their concerns will be taken seriously, and that they can safely express their views and give feedback

Students can report concerns:

- Directly to a member of the safeguarding team or using the safeguarding@basildonacademies.org.uk email
- Students are informed of reporting methods through discussion in their relationships/sex education curriculum, student briefings and signage throughout the school.
- Students who make a report of any concern will be reassured following their disclosures

8. Online safety and the use of mobile technology

We recognise the importance of safeguarding children from potentially harmful and inappropriate online material, and we understand that technology is a significant component in many safeguarding and wellbeing issues.

To address this, our school aims to:

- Have robust processes (including filtering and monitoring systems) in place to ensure the online safety of students, staff, volunteers and governors
- Protect and educate the whole school community in its safe and responsible use of technology, including mobile and smart technology (which we refer to as 'mobile phones')
- Set clear guidelines for the use of mobile phones for the whole school community
- Establish clear mechanisms to identify, intervene in and escalate any incidents or concerns, where appropriate
- Make use of student voice to support identifying potential risks

The 4 key categories of risk

Our approach to online safety is based on addressing the following categories of risk:

- Content** – being exposed to illegal, inappropriate or harmful content, such as pornography, fake news, racism, misogyny, self-harm, suicide, antisemitism, radicalisation and extremism
- Contact** – being subjected to harmful online interaction with other users, such as peer-to-peer pressure, commercial advertising and adults posing as children or young adults with the intention to groom or exploit them for sexual, criminal, financial or other purposes
- Conduct** – personal online behaviour that increases the likelihood of, or causes, harm, such as making, sending and receiving explicit images (e.g. consensual and non-consensual sharing of nudes and semi-nudes and/or pornography), sharing other explicit images and online bullying; and
- Commerce** – risks such as online gambling, inappropriate advertising, phishing and/or financial scams

To meet our aims and address the risks above, we will:

- Educate students about online safety as part of our curriculum. For example:
 - The safe use of social media, the internet and technology

- Keeping personal information private
- How to recognise unacceptable behaviour online
- How to report any incidents of cyber-bullying, ensuring students are encouraged to do so, including where they're a witness rather than a victim
- Train staff, as part of their induction, on safe internet use and online safeguarding issues including cyber-bullying, the risks of online radicalisation, and the expectations, roles and responsibilities around filtering and monitoring. All staff members will receive refresher training as required and at least once each academic year
- Educate parents/carers about online safety via our website, communications sent directly to them and during parents' evenings. We will also share clear procedures with them so they know how to raise concerns about online safety
- Make sure staff are aware of any restrictions placed on them with regards to the use of their mobile phone and cameras, for example that:
 - Staff are allowed to bring their personal phones to school for their own use, but will limit such use to non-contact time when students are not present
 - Staff will not take pictures or recordings of students on their personal phones or cameras
- Make all students, parents/carers, staff, volunteers and governors aware that they are expected to sign an agreement regarding the acceptable use of the internet in school, use of the school's ICT systems and use of their mobile and smart technology
- Explain the sanctions we will use if a student is in breach of our policies on the acceptable use of the internet and mobile phones
- Make sure all staff, students and parents/carers are aware that staff have the power to search students' phones, as set out in the [DfE's guidance on searching, screening and confiscation](#)
 - Put in place robust filtering and monitoring systems to limit children's exposure to the 4 key categories of risk (described above) from the school's IT systems.
 - The academy employs several systems and services to monitor and filter the use and access of the academy's IT provision. These include, a firewall filtering internet usage, this filters out harmful content that may be being viewed, any concerns regarding student use is filtered and any concerns forwarded to the DSL, all internet traffic is logged and is available if needed in the future.
 - The academy email system is filtered through Office 365 for harmful attachments and a comprehensive anti-virus provision also scans visited websites for malicious software.
 - All systems used for filtering & Monitoring are automatically updated by the providers.
 - Encourage students to be active in reporting harmful content through websites/social media platforms
- Carry out an annual review of our approach to online safety, supported by an annual risk assessment that considers and reflects the risks faced by our school community
- Provide regular safeguarding and children protection updates including online safety to all staff, at least annually, in order to continue to provide them with the relevant skills and knowledge to safeguard effectively
- Review the child protection and safeguarding policy, including online safety, annually and ensure the procedures and implementation are updated and reviewed regularly

This section summarises our approach to online safety and mobile phone use. For full details about our school's policies in these areas, please refer to our online safety policy and mobile phone policies which can be found on P:drive/BA Policies or via our schools websites.

[The Basildon Upper Academy - Online Safety Policy \(basildonupperacademy.org.uk\)](https://www.basildonupperacademy.org.uk)

[The Basildon Lower Academy - Online Safety Policy \(basildonloweracademy.org.uk\)](https://www.basildonloweracademy.org.uk)

8.1 Artificial intelligence (AI)

Generative artificial intelligence (AI) tools are now widespread and easy to access. Staff, students and parents/carers may be familiar with generative chatbots such as ChatGPT and Google Bard.

The Basildon Academies recognises that AI has many uses, including enhancing teaching and learning, and in helping to protect and safeguard students. However, AI may also have the potential to facilitate abuse (e.g. bullying and grooming) and/or expose students to harmful content. For example, in the form of 'deepfakes', where AI is used to create images, audio or video hoaxes that look real.

The Basildon Academies will treat any use of AI to access harmful content or bully students in line with this policy and our anti-bullying and behaviour policy.

Staff should be aware of the risks of using AI tools whilst they are still being developed and should carry out risk assessments for any new AI tool being used by the school.

9. Notifying parents or carers

Where appropriate, we will discuss any concerns about a child with the child's parents or carers. The DSL will normally do this in the event of a suspicion or disclosure.

Other staff will only talk to parents or carers about any such concerns following consultation with the DSL.

If we believe that notifying the parents or carers would increase the risk to the child, we will discuss this with the local authority children's social care team before doing so.

In the case of allegations of abuse made against other children, we will normally notify the parents or carers of all the children involved. We will think carefully about what information we provide about the other child involved, and when. We will work with the police and/or local authority children's social care to make sure our approach to information sharing is consistent.

The DSL will, along with any relevant agencies (this will be decided on a case-by-case basis):

- Meet with the reporting students' parents or carers, with the student, to discuss what's being put in place to safeguard them, and understand their wishes in terms of what support they may need and how the report will be progressed
- Meet with the alleged reported parents or carers to discuss support for them, and what's being put in place that will impact them, e.g. moving them out of classes with the victim, and the reason(s) behind any decision(s)

10. Students with special educational needs, disabilities or health issues

We recognise that students with SEND or certain health conditions can face additional safeguarding challenges, and are 3 times more likely to be abused than their peers. Additional barriers can exist when recognising abuse and neglect in this group, including:

- Assumptions that indicators of possible abuse such as behaviour, mood and injury relate to the child's condition without further exploration
- Students being more vulnerable to peer group isolation or bullying (including prejudice-based bullying) than other students
- The potential for students with SEN, disabilities or certain health conditions being disproportionately impacted by behaviours such as bullying, without outwardly showing any signs
- Communication barriers and difficulties in managing or reporting these challenges

We offer extra pastoral support for these students as required through our SEND and Wellbeing teams.

Any abuse involving students with SEND will require close liaison with the DSL (or deputy) and the SENCO.

11. Students with a social worker

Students may need a social worker due to safeguarding or welfare needs. We recognise that a child's experiences of adversity and trauma can leave them vulnerable to further harm as well as potentially creating barriers to attendance, learning, behaviour and mental health.

The DSL and all members of staff will work with and support social workers to help protect vulnerable children.

Where we are aware that a student has a social worker, the DSL will always consider this fact to ensure any decisions are made in the best interests of the student's safety, welfare and educational outcomes. For example, it will inform decisions about:

- Responding to unauthorised absence or absent from education where there are known safeguarding risks
- The provision of pastoral and/or academic support

12. Children that are looked-after and previously looked-after

We will ensure that staff have the skills, knowledge and understanding to keep looked-after children and previously looked-after children safe. In particular, we will ensure that:

- Appropriate staff have relevant information about children's looked after legal status, contact arrangements with birth parents or those with parental responsibility, and care arrangements
- The DSL has details of children's social workers and relevant virtual school heads

We have appointed a designated teacher for each site who is responsible for promoting the educational achievement of children that are looked-after children and children previously looked-after in line with [statutory guidance](#).

The designated teacher is appropriately trained and has the relevant qualifications and experience to perform the role.

As part of their role, the designated teacher will:

- Work closely with the DSL to ensure that any safeguarding concerns regarding looked-after and previously looked-after children are quickly and effectively responded to
- Work with virtual school heads to promote the educational achievement of looked-after and previously looked-after children, including discussing how student premium plus funding can be best used to support looked-after children and meet the needs identified in their personal education plans

13. Complaints and concerns about school safeguarding policies

13.1 Complaints against staff

All staff members are made aware of the boundaries of appropriate behaviour and conduct. These matters form part of staff induction and are outlined in our Staff Behaviour policy / Code of Conduct. Our setting works in accordance with statutory guidance and the SET Procedures (ESCB, 2022) in respect of allegations against an adult working with children (in a paid or voluntary capacity).

Complaints against staff that are likely to require a child protection investigation will be handled in accordance with our procedures for dealing with allegations of abuse made against staff (see appendix 3). The school has processes in place for reporting any concerns about a member of staff (or any adult working with children). Any concerns about the conduct of a member of staff must be referred to the Headteacher (or the DSL in their absence). Where the allegation concerns an agency member of staff, the Headteacher will liaise with the agency, while following due process.

13.2 Other complaints

If you have a complaint regarding how a safeguarding situation has been responded to refer to or complaints policy which can be found via the following links:

[Upper – complaints policy and procedures](#)

[Lower – complaints policy and procedures](#)

Our complaints procedure has three stages, each of which is dealt with in more detail later in this document.

They are:

- Stage one: Initial Concerns;
- Stage two: Formal Complaint;
- Stage three: Complaint heard by Trust Board’s complaints appeal panel.

Where possible, the Academies will seek to resolve complaints informally in the first instance, however formal procedures will be invoked when attempts to resolve the issue informally are unsuccessful and the person raising the concern remains dissatisfied and wishes to take the matter further. For further information please refer to the complaints policy on P:Drive/BA Policies

13.3 Whistle-blowing

Whistleblowing is ‘making a disclosure in the public interest’ and occurs when a worker (or member of the wider school community) raises a concern about danger or illegality that affects others, for example students in the school or members of the public. Examples of whistle blowing may include:

- someone’s health and safety is in danger;
- covering up wrongdoing;
- misusing public funds;
- actions that negatively affect the welfare of children

All staff members are made aware of the duty to raise concerns about the attitude or actions of staff in line with the school’s Code of Conduct / Whistleblowing policy. Which can be found through the following links:

[The Basildon Upper Academy - Governance](#)

[The Basildon Lower Academy - Governance](#)

We want everyone to feel able to report any child protection / safeguarding concerns. However, for members of staff who feel unable to raise these concerns internally, they can call the the NSPCC whistleblowing helpline on: 0800 028 0285 (line is available from 8:00 AM to 8:00 PM, Monday to Friday) or email: help@nspcc.org.uk.

Parents or others in the wider school community with concerns can contact the NSPCC general helpline on: 0808 800 5000 (24-hour helpline) or email: help@nspcc.org.uk.

14. Record-keeping

We will hold records in line with our records retention schedule.

All safeguarding concerns, discussions, decisions made and the reasons for those decisions, must be recorded in writing. If you are in any doubt about whether to record something, discuss it with the DSL.

Records will include:

- A clear and comprehensive summary of the concern
- Details of how the concern was followed up and resolved
- A note of any action taken, decisions reached and the outcome

Concerns and referrals will be kept in a separate child protection file for each child.

Any non-confidential records will be readily accessible and available. Confidential information and records will be held securely and only available to those who have a right or professional need to see them.

Safeguarding records relating to individual children will be retained for a reasonable period of time after they have left the school.

If a child for whom the school has, or has had, safeguarding concerns moves to another school, the DSL will ensure that their child protection file is forwarded as soon as possible, securely, and separately from the main student file.

To allow the new school/college to have support in place when the child arrives, this should be within:

- **5 days** for an in-year transfer, or within
- **The first 5 days** of the start of a new term

In addition, if the concerns are significant or complex, and/or social services are involved, the DSL will speak to the DSL of the receiving school and provide information to enable them to have time to make any necessary preparations to ensure the safety of the child.

In addition:

- Appendix 2 sets out our policy on record-keeping specifically with respect to recruitment and pre-appointment checks
- Appendix 3 sets out our policy on record-keeping with respect to allegations of abuse made against staff

15. Training

15.1 All staff

All staff members will undertake safeguarding and child protection training at induction, including on whistle-blowing procedures and online safety, to ensure they understand the school's safeguarding systems and their responsibilities, and can identify signs of possible abuse or neglect.

This training will be regularly updated and will:

- Be integrated, aligned and considered as part of the whole-school safeguarding approach and wider staff training, and curriculum planning
- Be in line with advice from the 3 safeguarding partners
- Include online safety, including an understanding of the expectations, roles and responsibilities for staff around filtering and monitoring
- Have regard to the Teachers' Standards to support the expectation that all teachers:
 - Manage behaviour effectively to ensure a good and safe environment
 - Have a clear understanding of the needs of all students

All staff will have training on the government's anti-radicalisation strategy, Prevent, to enable them to identify children at risk of being drawn into terrorism and to challenge extremist ideas.

Staff will also receive regular safeguarding and child protection updates, including on online safety, as required but at least annually (for example, through emails, e-bulletins and staff meetings).

Contractors who are provided through a private finance initiative (PFI) or similar contract will also receive safeguarding training.

Volunteers will receive appropriate training, if applicable.

15.2 The DSL and deputies

The DSL and deputies will undertake child protection and safeguarding training at least every 2 years.

In addition, they will update their knowledge and skills at regular intervals and at least annually (for example, through e-bulletins, meeting other DSLs, or taking time to read and digest safeguarding developments).

They will also undertake Prevent awareness training.

15.3 Governors

All governors receive training about safeguarding and child protection (including online safety) at induction, which is regularly updated. This is to make sure that they:

- Have the knowledge and information needed to perform their functions and understand their responsibilities, such as providing strategic challenge
- Can be assured that safeguarding policies and procedures are effective and support the school to deliver a robust whole-school approach to safeguarding

As the chair of governors may be required to act as the 'case manager' in the event that an allegation of abuse is made against the Headteacher, they receive training in managing allegations for this purpose.

15.4 Recruitment – interview panels

At least 1 person conducting any interview for any post at the school will have undertaken safer recruitment training. This will cover, as a minimum, the contents of Keeping Children Safe in Education, and will be in line with local safeguarding procedures.

See appendix 2 of this policy for more information about our safer recruitment procedures.

16. Monitoring arrangements

This policy will be reviewed **annually** by the DSL. At every review, it will be approved by the full trust board.

17. Links with other policies

This policy links to the following policies and procedures. This is not an exhaustive list:

- Behaviour and Attitude to Learning
- Staff code of conduct
- Complaints
- Health and safety at work
- Attendance
- Online safety
- Mobile phone use
- Equality
- Relationships and sex education
- First aid
- Curriculum
- Designated teacher for looked-after and previously looked-after children
- Privacy notices
- Whistleblowing
- IT Acceptable Use
- Anti-Bullying
- Social Media

These appendices are based on the Department for Education's statutory guidance, Keeping Children Safe in Education.

Appendix 1: types of abuse

Abuse, including neglect, and safeguarding issues are rarely standalone events that can be covered by 1 definition or label. In most cases, multiple issues will overlap.

Physical abuse may involve hitting, shaking, throwing, poisoning, burning or scalding, drowning, suffocating or otherwise causing physical harm to a child. Physical harm may also be caused when a parent or carer fabricates the symptoms of, or deliberately induces, illness in a child.

Emotional abuse is the persistent emotional maltreatment of a child such as to cause severe and adverse effects on the child's emotional development. Some level of emotional abuse is involved in all types of maltreatment of a child, although it may occur alone.

Emotional abuse may involve:

- Conveying to a child that they are worthless or unloved, inadequate, or valued only insofar as they meet the needs of another person
- Not giving the child opportunities to express their views, deliberately silencing them or 'making fun' of what they say or how they communicate
- Age or developmentally inappropriate expectations being imposed on children. These may include interactions that are beyond a child's developmental capability, as well as overprotection and limitation of exploration and learning, or preventing the child participating in normal social interaction
- Seeing or hearing the ill-treatment of another
- Serious bullying (including cyber-bullying), causing children frequently to feel frightened or in danger, or the exploitation or corruption of children

Sexual abuse involves forcing or enticing a child or young person to take part in sexual activities, not necessarily involving a high level of violence, whether or not the child is aware of what is happening. The activities may involve:

- Physical contact, including assault by penetration (for example, rape or oral sex) or non-penetrative acts such as masturbation, kissing, rubbing and touching outside of clothing
- Non-contact activities, such as involving children in looking at, or in the production of, sexual images, watching sexual activities, encouraging children to behave in sexually inappropriate ways, or grooming a child in preparation for abuse (including via the internet)

Sexual abuse is not solely perpetrated by adult males. Women can also commit acts of sexual abuse, as can other children.

Neglect is the persistent failure to meet a child's basic physical and/or psychological needs, likely to result in the serious impairment of the child's health or development. Neglect may occur during pregnancy as a result of maternal substance abuse.

Once a child is born, neglect may involve a parent or carer failing to:

- Provide adequate food, clothing and shelter (including exclusion from home or abandonment)
- Protect a child from physical and emotional harm or danger
- Ensure adequate supervision (including the use of inadequate care-givers)
- Ensure access to appropriate medical care or treatment

It may also include neglect of, or unresponsiveness to, a child's basic emotional needs.

Allegations against staff (including low-level concerns) policy

Section 1: allegations that may meet the harm threshold

This is concerning any incidence or situation where it may indicate or is alleged that anyone working in the school in their current position or capacity would pose a risk of harm.

This guidance should be followed where it is alleged that anyone working in the Academy that provides education for children under 18 years of age, including supply teachers, volunteers and contractors has:

- behaved in a way that has harmed a child, or may have harmed a child;
- possibly committed a criminal offence against or related to a child;
- behaved towards a child or children in a way that indicates he or she may pose a risk of harm to children; or
- behaved or may have behaved in a way that indicates they may not be suitable to work with children. This includes behaviour that may have happened

This relates to members of staff, supply staff and volunteers who are currently working in any school or college regardless of whether the academy is where the alleged abuse took place. Where appropriate an assessment of transferable risk to children with whom the person works will be undertaken and if necessary advice will be sought from the local authority designated officer (LADO).

Allegations of this nature should always be reported to the Headteacher or in their absence the Deputy Headteacher (DSL). The Headteacher will be appointed as the case manager, where the Headteacher is the subject of an allegation the chair of governors will act as case manager.

Initial response to an allegation

Where it has been identified a child has been harmed, that there may be an immediate risk of harm to a child or if the situation is an emergency, we will contact children's social care and as appropriate the police immediately as per the processes explained earlier in the policy.

There are two aspects to consider when an allegation is made:

- Looking after the welfare of the child:
 - the designated safeguarding lead is responsible for ensuring that the child is not at risk and referring cases of suspected abuse to the local authority children's social care.
- Investigating and supporting the person subject to the allegation:
 - the case manager will discuss with the LADO, the nature, content and context of the allegation, and agree a course of action.

When dealing with allegations, the academy will:

- apply common sense and judgement;
- deal with allegations quickly, fairly and consistently; and
- provide effective protection for the child and support the person subject to the allegation.

Before the LADO is contacted, the case manager will ensure all basic enquires are made in line with local procedures to help establish the facts and determine any foundation to the allegation.

Other Considerations:

- When to inform the individual of the allegation should be on a case by case basis, guidance should be sought from the LADO and if appropriate social care and the police.
- If there is cause to suspect a child is suffering, or is likely to suffer significant harm, a strategy discussion involving the police and/or children's social care will be convened in accordance with the statutory guidance Working Together to Safeguard Children.
- If the allegation is about physical contact, for example restraint, the strategy discussion or initial evaluation with the LADO should consider that teachers and other academy staff are entitled to use reasonable force to control or restrain children in certain circumstances, including dealing with disruptive behaviour.
- If there is cause to suspect a child is suffering, or is likely to suffer significant harm, a strategy discussion involving the police and/or children's social care will be convened in accordance with the statutory guidance Working Together to Safeguard Children.
- If the allegation is about physical contact, for example restraint, the strategy discussion or initial evaluation with the LADO should consider that teachers and other school and college staff are entitled

to use reasonable force to control or restrain children in certain circumstances, including dealing with disruptive behaviour.

Further information about the use of reasonable force can be found in Part 2 of KCSiE 2023 and on GOV.UK.

- Where the case manager is concerned about the welfare of other children in the community or the member of staff's family, they should discuss these concerns with the designated safeguarding lead and make a risk assessment of the situation. It may be necessary for the designated safeguarding lead to make a referral to children's social care.
- Where it is clear that an investigation by the police or children's social care is unnecessary, or the strategy discussion or initial assessment decides that is the case, the Case manager will discuss next steps with the LADO.

No further action

Where the initial discussion and enquires leads to no further action, case manager and the LADO should:

- Record the decision and justification for it; and
- Agree on what information should be put into writing to the individual concerned and by whom

Further Enquires

- Where further enquires are required to reach a decision the case manager and the LADO will discuss how and by whom the investigation should be undertaken. A member of the Senior leadership team will be asked to undertake the investigation in a straightforward case.
- Local Authority can provide support in the form of an independent investigator if the nature or complexity of the allegation requires
- Progress of the investigation will be monitored by the case manager and regular reviews take place on progress, ideally fortnightly or monthly intervals. The first review should take place no later than a month after initial assessment. The LADO will be consulted to support.

Supply Teacher and all Contracted Staff

Schools and colleges as employers have a duty of care to their employees. They should ensure they provide effective support for anyone facing an allegation and provide them with a named contact if they are suspended.

Where the Academy is not the employer of an individual they still have responsibility to ensure allegations are dealt with appropriately and that they liaise with relevant parties as the academy disciplinary procedures may not fully apply. Agencies may have their own policies and procedures.

Whilst the academy is not the employer of supply teachers, It is essential that any allegation of abuse is dealt with properly and in a timely manner into consideration the following:

- It is dealt with in a fair and consistent way that provides effective protection for the child and, at the same time supports the person who is the subject of the allegation.
- That the decision to cease to use a supply teacher due to safeguarding concerns should not be made without finding out the facts and liaising with the LADO to find a suitable outcome.
- The Academy will take the lead in investigation any allegation as agencies do not have direct access to students, staff or access to the information required by the LADO. However, the academy will ensure the agency is fully involved.
- When using agencies, the academy will inform them of its process for managing allegations.

If staff have safeguarding concerns, or an allegation is made about another member of Supply staff) or volunteer posing a risk of harm to children, then:

- this should be referred to the Headteacher or deputy Headteacher;
- In the event that this is not possible this should be referred to the DSL in the normal way.

Allegations against Governors

If an allegation is made against a governor, schools and college should follow their own local procedures. Where an allegation is substantiated, they should follow the procedures to consider removing them from office.

In the event of any allegation being reported against any employee at the Academies, suspension should not be an automatic response. All options to avoid suspension should be considered prior to this step - Please see the academies disciplinary policy in relation to this procedure. School leaders can also find guidance in KCSiE 2023 Part 4.

Supporting those involved

Duty of Care

The welfare of a child is paramount and this will be the prime concern in terms of investigating an allegation against a person in a position of trust. However, when an allegation or safeguarding concern is being investigated it is likely to be a very stressful experience for the adult subject of the investigation, and potentially for their family members.

The Academy recognises that it has a duty of care to staff and recognises the sensitivity of any such situation. Information is confidential and should not ordinarily be shared with any other party who are not directly involved in the investigation.

Parents and Carers of the child or children involved should also be informed of the allegation and the processes involved.

Confidentiality and information sharing

In line with earlier guidance on information sharing in relation to any allegations reported the following guidance may be referred to if an allegation is made:

- In an allegation management meeting or during the initial assessment of the case, the agencies involved should share all relevant information they have about the person who is the subject of the allegation, and about the alleged victim
- If the police are involved, wherever possible the academy will ask the police to obtain consent from the individuals involved to share their statements and evidence for use in the employer's disciplinary process.
- Children's social care should adopt a similar procedure when making enquiries to determine whether the child or children named in the allegation are in need of protection or services,
- The academy will make every effort to maintain confidentiality and guard against unwanted publicity while an allegation is being investigated or considered.

Please see KCSiE 2023 Part 4 for further guidance regarding reporting on incidents.

Allegation Outcomes

Any outcomes will be made in line with the academy's disciplinary policy however the following definitions should be used when determining the outcome of the allegation

- Substantiated: there is sufficient evidence to prove the allegation;
- Malicious: there is sufficient evidence to disprove the allegation and there has been a deliberate act to deceive or cause harm to the person subject of the allegation;
- False: there is sufficient evidence to disprove the allegation;
- Unsubstantiated: there is insufficient evidence to either prove or disprove the allegation. The term, therefore, does not imply guilt or innocence; or,
- Unfounded: to reflect cases where there is no evidence or proper basis which supports the allegation being made.

Further guidance for Academy Leaders relating to allegation outcomes can be found in KCSiE 2023 Part 4

Other Outcomes

- Where there has been a criminal investigation the academy will work in line with the police and the LADO. Joint assessments will be made regarding the case whether any further action is appropriate. Information supplied by any other agencies will be processed and decisions will be made in line with the academies disciplinary policy
- Unsubstantiated, Unfounded, False or malicious allegations: If the allegation is deemed to be unsubstantiated, unfounded, false or malicious the academy will work with the LADO to consider if the child / or person the allegation is against need any support or help, or may have been making a cry for help. The academy will take appropriate action including referrals to Social Care

- If the report is deemed to be deliberately invented or malicious the academy will consider appropriate disciplinary action in line with the academy's behaviour policy.

Managing the Situation, exit arrangement & references

- All guidance and procedures relating to exit arrangements or other management aspect will be under the guidance of the Academy HR department, governors and in line with the academy disciplinary policy.
- Any false, unsubstantiated or unfounded allegation should not be included in references. Any substantiated allegations should be included provided the information is factual

Further guidance for Academy Leaders relating to managing the situation and exit arrangements can be found in KCSiE 2023 Part 4.

Record Keeping

Further guidance for Academy Leaders relating to record keeping can be found in KCSiE 2023 Part 4.

Non-recent allegations

Allegations against a teacher who is no longer teaching should be referred to the police. Historical allegations of abuse should also be referred to the police.

Where an adult makes an allegation to a school or college that they were abused as a child, the individual should be advised to report the allegation to the police. Non-recent allegations made by a child, should be reported to the LADO in line with the local authority's procedures for dealing with non-recent allegations. The LADO will coordinate with children social care and the police. Abuse can be reported no matter how long ago it happened.

2. Concerns that do not meet the harm threshold – Low Level Concerns

Where there are concerns which are not deemed to meet the harm threshold they will be dealt with in line with the following academy policies: Code of Conduct, Disciplinary policy, Complaints policy, Grievance policy, Behaviour Policy, Safeguarding policy, Whistleblowing policy

Low Level concerns

The term 'low-level' concern does not mean that it is insignificant, it means that the behaviour towards a child does not meet the threshold set out in the previous section

A low-level concern is any concern – no matter how small, and even if no more than causing a sense of unease or a 'nagging doubt' - that an adult working in or on behalf of the school or college may have acted in a way that:

- is inconsistent with the staff code of conduct, including inappropriate conduct outside of work; and
- does not meet the allegations threshold or is otherwise not considered serious enough to consider a referral to the LADO.

Examples of such behaviour can be found in appendix O and in the Staff Code of conduct

The academy encourages an open and transparent culture where all concerns about adults in which all concerns about all adults working in or on behalf of the academy including supply teachers, volunteers and contractors are shared responsibly with the right person, recorded and dealt with promptly and appropriately.

Sharing Low Level concerns

Any low-level concerns about a member of staff, supply staff, volunteer or contractor should be reported to the Headteacher. If the Headteacher is not available then the report should be made to the DSL.

All low-level concerns will be recorded in writing in line with the Academies HR process, and stored securely and confidentially.

Responding to Low Level concerns

When a concern has been raised it will be responded to in accordance with processes laid out in the staff code of conduct, Whistleblowing policy and the academy disciplinary policy. The Headteacher will collect as much information as possible speaking with those who raised the concern and any potential witnesses

Low-Level concerns which are shared about supply staff and contractors should be notified to their employers, so that any potential patterns of inappropriate behaviour can be identified.

If the safeguarding team are in any doubt as to whether the information which has been shared about a member of staff as a low-level concern in fact meets the harm threshold, they should consult with their LADO

Promoting positive mental health and resilience in school

Positive mental health is the concern of the whole communi

ty and we recognise that schools play a key part in this. Our school wants to develop the emotional wellbeing and resilience of all students and staff, as well as provide specific support for those with additional needs. We understand that there are risk factors which increase someone's vulnerability and protective factors that can promote or strengthen resiliency. Mental health problems can, in some cases, be an indicator that a child has suffered or is at risk of suffering abuse, neglect or exploitation. The more risk factors present in an individual's life, the more protective factors or supportive interventions are required to counter balance and promote further growth of resilience.

The academy's Wellbeing centre and Mental Health leads support a whole school approach to mental Health, supporting students and staff mental health. Concerns can be reported through a clear triage system via HOY or directly to the Wellbeing team via CPOMs

It is vital that we work in partnership with parents to support the well-being of our students. Parents should share any concerns about the well-being of their child with school, so appropriate support and interventions can be identified and implemented.

Use of reasonable force

The term 'reasonable force' covers a broad range of actions used by staff that involve a degree of physical contact to control or restrain children. There are circumstances when it is appropriate for staff to use reasonable force to safeguard children and young people, such as guiding a child to safety or breaking up a fight. 'Reasonable' means using no more force than is needed. Our school works in accordance with statutory and local guidance on the use of reasonable force and recognises that where intervention is required, it should always be considered in a safeguarding context.

Appendix 4: specific safeguarding issues

Checking the identity and suitability of visitors

All visitors will be required to verify their identity to the satisfaction of staff.

If the visitor is unknown to the setting, we will check their credentials and reason for visiting before allowing them to enter the setting. Visitors should be ready to produce identification.

Visitors are expected to sign the visitors' book and wear a visitor's badge.

Visitors to the school who are visiting for a professional purpose, such as educational psychologists and school improvement officers, will be asked to show photo ID and:

- Will be asked to show their DBS certificate, which will be checked alongside their photo ID; or
- The organisation sending the professional, such as the LA or educational psychology service, will provide prior written confirmation that an appropriate level of DBS check has been carried out (if this is provided, we will not ask to see the DBS certificate)

All other visitors, including visiting speakers, will be accompanied by a member of staff at all times. We will not invite into the school any speaker who is known to disseminate extremist views, and will carry out appropriate checks to ensure that any individual or organisation using school facilities is not seeking to disseminate extremist views or radicalise students or staff.

Children who are absent from education

A child being absent from education, particularly repeatedly, can be a warning sign of a range of safeguarding issues. This might include abuse or neglect, such as sexual abuse or exploitation or child criminal exploitation, or issues such as mental health problems, substance abuse, radicalisation, FGM or forced marriage.

There are many circumstances where a child may be absent or become missing from education, but some children are particularly at risk. These include children who:

- Are at risk of harm or neglect
- Are at risk of forced marriage or FGM
- Come from Gypsy, Roma, or Traveller families
- Come from the families of service personnel
- Go missing or run away from home or care
- Are supervised by the youth justice system
- Cease to attend a school
- Come from new migrant families

We will follow our procedures for unauthorised absence and for dealing with children who are absent from education, particularly on repeat occasions, to help identify the risk of abuse and neglect, including sexual exploitation, and to help prevent the risks of going missing in future. This includes informing the local authority if a child leaves the school without a new school being named, and adhering to requirements with respect to sharing information with the local authority, when applicable, when removing a child's name from the admission register at non-standard transition points.

Staff will be trained in signs to look out for and the individual triggers to be aware of when considering the risks of potential safeguarding concerns which may be related to being absent, such as travelling to conflict zones, FGM and forced marriage.

If a staff member suspects that a child is suffering from harm or neglect, we will follow local child protection procedures, including with respect to making reasonable enquiries. We will make an immediate referral to the local authority children's social care team, and the police, if the child is suffering or likely to suffer from harm, or in immediate danger.

Child criminal exploitation

Child criminal exploitation (CCE) is a form of abuse where an individual or group takes advantage of an imbalance of power to coerce, control, manipulate or deceive a child into criminal activity, in exchange for something the victim needs or wants, and/or for the financial or other advantage of the perpetrator or facilitator, and/or through violence or the threat of violence.

The abuse can be perpetrated by males or females, and children or adults. It can be a one-off occurrence or a series of incidents over time, and range from opportunistic to complex organised abuse.

The victim can be exploited even when the activity appears to be consensual. It does not always involve physical contact and can happen online. For example, young people may be forced to work in cannabis factories, coerced into moving drugs or money across the country (county lines), forced to shoplift or pickpocket, or to threaten other young people.

Indicators of CCE can include a child:

- Appearing with unexplained gifts or new possessions
- Associating with other young people involved in exploitation
- Suffering from changes in emotional wellbeing
- Misusing drugs and alcohol
- Going missing for periods of time or regularly coming home late
- Regularly missing school or education
- Not taking part in education

If a member of staff suspects CCE, they will discuss this with the DSL. The DSL will trigger the local safeguarding procedures, including a referral to the local authority's children's social care team and the police, if appropriate.

Child sexual exploitation

Child sexual exploitation (CSE) is a form of child sexual abuse where an individual or group takes advantage of an imbalance of power to coerce, manipulate or deceive a child into sexual activity, in exchange for something the victim needs or wants and/or for the financial advantage or increased status of the perpetrator or facilitator. It may, or may not, be accompanied by violence or threats of violence.

The abuse can be perpetrated by males or females, and children or adults. It can be a one-off occurrence or a series of incidents over time, and range from opportunistic to complex organised abuse.

The victim can be exploited even when the activity appears to be consensual. Children or young people who are being sexually exploited may not understand that they are being abused. They often trust their abuser and may be tricked into believing they are in a loving, consensual relationship.

CSE can include both physical contact (penetrative and non-penetrative acts) and non-contact sexual activity. It can also happen online. For example, young people may be persuaded or forced to share sexually explicit images of themselves, have sexual conversations by text, or take part in sexual activities using a webcam. CSE may also occur without the victim's immediate knowledge, for example through others copying videos or images.

In addition to the CCE indicators above, indicators of CSE can include a child:

- Having an older boyfriend or girlfriend
- Suffering from sexually transmitted infections or becoming pregnant

If a member of staff suspects CSE, they will discuss this with the DSL. The DSL will trigger the local safeguarding procedures, including a referral to the local authority's children's social care team and the police, if appropriate.

Child-on-child abuse

Child-on-child abuse is when children abuse other children. This type of abuse can take place inside and outside of school. It can also take place both face-to-face and online, and can occur simultaneously between the 2.

Our school has a zero-tolerance approach to sexual violence and sexual harassment. We recognise that even if there are there no reports, that doesn't mean that this kind of abuse isn't happening.

Child-on-child abuse is most likely to include, but may not be limited to:

- Bullying (including cyber-bullying, prejudice-based and discriminatory bullying)
- Abuse in intimate personal relationships between children (this is sometimes known as 'teenage relationship abuse')
- Physical abuse such as hitting, kicking, shaking, biting, hair pulling, or otherwise causing physical harm (this may include an online element which facilitates, threatens and/or encourages physical abuse)
- Sexual violence, such as rape, assault by penetration and sexual assault (this may include an online element which facilitates, threatens and/or encourages sexual violence)
- Sexual harassment, such as sexual comments, remarks, jokes and online sexual harassment, which may be standalone or part of a broader pattern of abuse
- Causing someone to engage in sexual activity without consent, such as forcing someone to strip, touch themselves sexually, or to engage in sexual activity with a third party
- Consensual and non-consensual sharing of nude and semi-nude images and/or videos (also known as sexting or youth produced sexual imagery)
- Upskirting, which typically involves taking a picture under a person's clothing without their permission, with the intention of viewing their genitals or buttocks to obtain sexual gratification, or cause the victim humiliation, distress or alarm
- Initiation/hazing type violence and rituals (this could include activities involving harassment, abuse or humiliation used as a way of initiating a person into a group and may also include an online element)

Where children abuse their peers online, this can take the form of, for example, abusive, harassing, and misogynistic messages; the non-consensual sharing of indecent images, especially around chat groups; and the sharing of abusive images and pornography, to those who don't want to receive such content.

If staff have any concerns about child-on-child abuse, or a child makes a report to them, they will follow the procedures set out in section 7 of this policy, as appropriate. In particular, section 7.8 and 7.9 set out more detail about our school's approach to this type of abuse.

When considering instances of harmful sexual behaviour between children, we will consider their ages and stages of development. We recognise that children displaying harmful sexual behaviour have often experienced their own abuse and trauma, and will offer them appropriate support.

Domestic abuse

Children can witness and be adversely affected by domestic abuse and/or violence at home where it occurs between family members. In some cases, a child may blame themselves for the abuse or may have had to leave the family home as a result.

Types of domestic abuse include intimate partner violence, abuse by family members, teenage relationship abuse (abuse in intimate personal relationships between children) and child/adolescent to parent violence and abuse. It can be physical, sexual, financial, psychological or emotional. It can also include ill treatment that isn't physical, as well as witnessing the ill treatment of others – for example, the impact of all forms of domestic abuse on children.

Anyone can be a victim of domestic abuse, regardless of gender, age, ethnicity, socioeconomic status, sexuality or background, and domestic abuse can take place inside or outside of the home. Children who witness domestic abuse are also victims.

Older children may also experience and/or be the perpetrators of domestic abuse and/or violence in their own personal relationships. This can include sexual harassment.

Exposure to domestic abuse and/or violence can have a serious, long-lasting emotional and psychological impact on children and affect their health, wellbeing, development and ability to learn.

If police are called to an incident of domestic abuse and any children in the household have experienced the incident, the police will inform the key adult in school (usually the designated safeguarding lead) before the child or children arrive at school the following day.

The DSL will provide support according to the child's needs and update records about their circumstances.

Homelessness

Being homeless or being at risk of becoming homeless presents a real risk to a child's welfare.

The DSL deputies will be aware of contact details and referral routes in to the local housing authority so they can raise/progress concerns at the earliest opportunity (where appropriate and in accordance with local procedures).

Where a child has been harmed or is at risk of harm, the DSL will also make a referral to children's social care.

So-called 'honour-based' abuse (including FGM and forced marriage)

So-called 'honour-based' abuse (HBA) encompasses incidents or crimes committed to protect or defend the honour of the family and/or community, including FGM, forced marriage, and practices such as breast ironing.

Abuse committed in this context often involves a wider network of family or community pressure and can include multiple perpetrators.

All forms of HBA are abuse and will be handled and escalated as such. All staff will be alert to the possibility of a child being at risk of HBA or already having suffered it. If staff have a concern, they will speak to the DSL, who will activate local safeguarding procedures.

FGM

The DSL will make sure that staff have access to appropriate training to equip them to be alert to children affected by FGM or at risk of FGM.

Section 7.3 of this policy sets out the procedures to be followed if a staff member discovers that an act of FGM appears to have been carried out or suspects that a student is at risk of FGM.

Indicators that FGM has already occurred include:

- A student confiding in a professional that FGM has taken place
- A mother/family member disclosing that FGM has been carried out
- A family/student already being known to social services in relation to other safeguarding issues
- A girl:
 - Having difficulty walking, sitting or standing, or looking uncomfortable
 - Finding it hard to sit still for long periods of time (where this was not a problem previously)
 - Spending longer than normal in the bathroom or toilet due to difficulties urinating
 - Having frequent urinary, menstrual or stomach problems
 - Avoiding physical exercise or missing PE
 - Being repeatedly absent from school, or absent for a prolonged period
 - Demonstrating increased emotional and psychological needs – for example, withdrawal or depression, or significant change in behaviour
 - Being reluctant to undergo any medical examinations

- Asking for help, but not being explicit about the problem
- Talking about pain or discomfort between her legs

Potential signs that a student may be at risk of FGM include:

- The girl's family having a history of practising FGM (this is the biggest risk factor to consider)
- FGM being known to be practised in the girl's community or country of origin
- A parent or family member expressing concern that FGM may be carried out
- A family not engaging with professionals (health, education or other) or already being known to social care in relation to other safeguarding issues
- A girl:
 - Having a mother, older sibling or cousin who has undergone FGM
 - Having limited level of integration within UK society
 - Confiding to a professional that she is to have a "special procedure" or to attend a special occasion to "become a woman"
 - Talking about a long holiday to her country of origin or another country where the practice is prevalent, or parents/carers stating that they or a relative will take the girl out of the country for a prolonged period
 - Requesting help from a teacher or another adult because she is aware or suspects that she is at immediate risk of FGM
 - Talking about FGM in conversation – for example, a girl may tell other children about it (although it is important to take into account the context of the discussion)
 - Being unexpectedly absent from school
 - Having sections missing from her 'red book' (child health record) and/or attending a travel clinic or equivalent for vaccinations/anti-malarial medication

The above indicators and risk factors are not intended to be exhaustive.

Forced marriage

Forcing a person into marriage is a crime. A forced marriage is one entered into without the full and free consent of 1 or both parties and where violence, threats, or any other form of coercion is used to cause a person to enter into a marriage. Threats can be physical or emotional and psychological.

It is also illegal to cause a child under the age of 18 to marry, even if violence, threats or coercion are not involved.

Staff will receive training around forced marriage and the presenting symptoms. We are aware of the '1 chance' rule, i.e. we may only have 1 chance to speak to the potential victim and only 1 chance to save them.

If a member of staff suspects that a student is being forced into marriage, they will speak to the student about their concerns in a secure and private place. They will then report this to the DSL.

The DSL will:

- Speak to the student about the concerns in a secure and private place
- Activate the local safeguarding procedures and refer the case to the local authority's designated officer
- Seek advice from the Forced Marriage Unit on 020 7008 0151 or fmfu@fco.gov.uk
- Refer the student to an education welfare officer, pastoral tutor, learning mentor, or school counsellor, as appropriate

Preventing radicalisation

- **Radicalisation** refers to the process by which a person comes to support terrorism and extremist ideologies associated with terrorist groups
- **Extremism** is vocal or active opposition to fundamental British values, such as democracy, the rule of law, individual liberty, and mutual respect and tolerance of different faiths and beliefs. This also includes calling for the death of members of the armed forces
- **Terrorism** is an action that:
 - Endangers or causes serious violence to a person/people;
 - Causes serious damage to property; or
 - Seriously interferes or disrupts an electronic system

The use or threat of terrorism must be designed to influence the government or to intimidate the public and is made for the purpose of advancing a political, religious or ideological cause.

Schools have a duty to prevent children from being drawn into terrorism. The DSL will undertake Prevent awareness training and make sure that staff have access to appropriate training to equip them to identify children at risk.

We will assess the risk of children in our school being drawn into terrorism. This assessment will be based on an understanding of the potential risk in our local area, in collaboration with our local safeguarding partners and local police force.

We will ensure that suitable internet filtering is in place, and equip our students to stay safe online at school and at home.

There is no single way of identifying an individual who is likely to be susceptible to an extremist ideology. Radicalisation can occur quickly or over a long period.

Staff will be alert to changes in students' behaviour.

The government website [Educate Against Hate](#) and charity [NSPCC](#) say that signs that a student is being radicalised can include:

- Refusal to engage with, or becoming abusive to, peers who are different from themselves
- Becoming susceptible to conspiracy theories and feelings of persecution
- Changes in friendship groups and appearance
- Rejecting activities they used to enjoy
- Converting to a new religion
- Isolating themselves from family and friends
- Talking as if from a scripted speech
- An unwillingness or inability to discuss their views
- A sudden disrespectful attitude towards others
- Increased levels of anger
- Increased secretiveness, especially around internet use
- Expressions of sympathy for extremist ideologies and groups, or justification of their actions
- Accessing extremist material online, including on Facebook or Twitter
- Possessing extremist literature
- Being in contact with extremist recruiters and joining, or seeking to join, extremist organisations

Children who are at risk of radicalisation may have low self-esteem, or be victims of bullying or discrimination. It is important to note that these signs can also be part of normal teenage behaviour – staff should have confidence in their instincts and seek advice if something feels wrong.

If staff are concerned about a student, they will follow our procedures set out in section 7.5 of this policy, including discussing their concerns with the DSL.

Staff should **always** take action if they are worried.

Sexual violence and sexual harassment between children in schools

Sexual violence and sexual harassment can occur:

- Between 2 children of any age and sex
- Through a group of children sexually assaulting or sexually harassing a single child or group of children
- Online and face to face (both physically and verbally)

Sexual violence and sexual harassment exist on a continuum and may overlap.

Children who are victims of sexual violence and sexual harassment will likely find the experience stressful and distressing. This will, in all likelihood, adversely affect their educational attainment and will be exacerbated if the alleged perpetrator(s) attends the same school.

If a victim reports an incident, it is essential that staff make sure they are reassured that they are being taken seriously and that they will be supported and kept safe. A victim should never be given the impression that they are creating a problem by reporting any form of abuse or neglect. Nor should a victim ever be made to feel ashamed for making a report.

When supporting victims, staff will:

- Reassure victims that the law on child-on-child abuse is there to protect them, not criminalise them
- Regularly review decisions and actions, and update policies with lessons learnt
- Look out for potential patterns of concerning, problematic or inappropriate behaviour, and decide on a course of action where we identify any patterns
- Consider if there are wider cultural issues within the school that enabled inappropriate behaviour to occur and whether revising policies and/or providing extra staff training could minimise the risk of it happening again
- Remain alert to the possible challenges of detecting signs that a child has experienced sexual violence, and show sensitivity to their needs

Some groups are potentially more at risk. Evidence shows that girls, children with SEN and/or disabilities, and lesbian, gay, bisexual and transgender (LGBT) children are at greater risk.

Staff should be aware of the importance of:

- Challenging inappropriate behaviours
- Making clear that sexual violence and sexual harassment is not acceptable, will never be tolerated and is not an inevitable part of growing up
- Challenging physical behaviours (potentially criminal in nature), such as grabbing bottoms, breasts and genitalia, pulling down trousers, flicking bras and lifting up skirts. Dismissing or tolerating such behaviours risks normalising them

If staff have any concerns about sexual violence or sexual harassment, or a child makes a report to them, they will follow the procedures set out in section 7 of this policy, as appropriate. In particular, section 7.8 and 7.9 set out more detail about our school's approach to this type of abuse.

Serious violence

Indicators which may signal that a child is at risk from, or involved with, serious violent crime may include:

- Increased absence from school
- Change in friendships or relationships with older individuals or groups
- Significant decline in performance

- Signs of self-harm or a significant change in wellbeing
- Signs of assault or unexplained injuries
- Unexplained gifts or new possessions (this could indicate that the child has been approached by, or is involved with, individuals associated with criminal networks or gangs and may be at risk of criminal exploitation (see above))

Risk factors which increase the likelihood of involvement in serious violence include:

- Being male
- Having been frequently absent or permanently excluded from school
- Having experienced child maltreatment
- Having been involved in offending, such as theft or robbery

Staff will be aware of these indicators and risk factors. If a member of staff has a concern about a student being involved in, or at risk of, serious violence, they will report this to the DSL.